

Courtesy Of Wally Karout Of Royal Lepage Arteam Realty

## \$624,900 - 17326 98a Street, Edmonton

MLS® #E4458088

**\$624,900**

3 Bedroom, 2.50 Bathroom, 2,070 sqft  
Single Family on 0.00 Acres

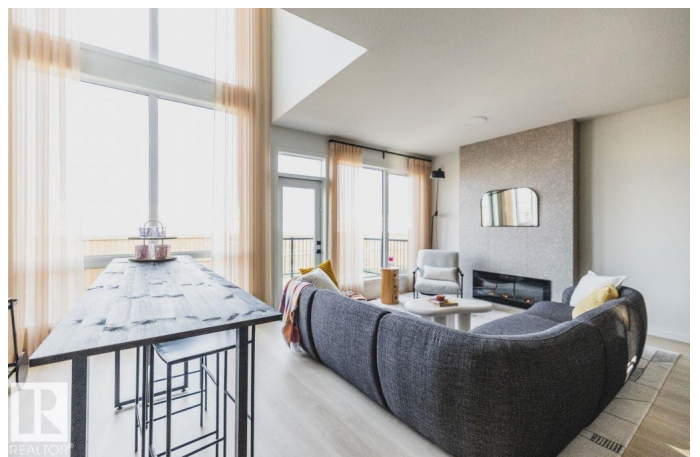
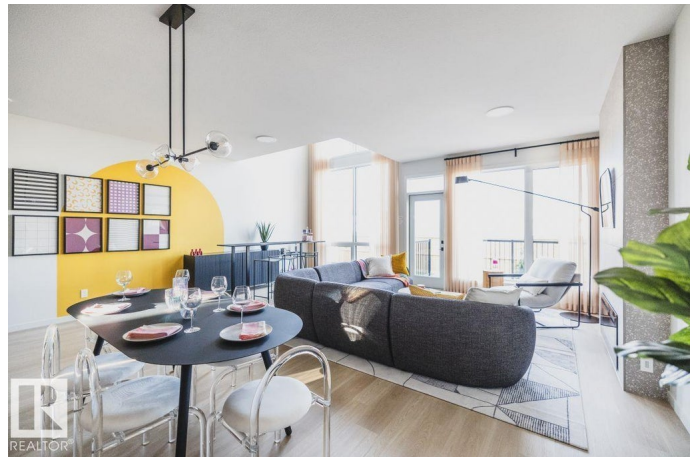
Elsinore, Edmonton, AB

Welcome to the Entertain Play 22 by award winning Cantiro Homes! You are the host thatâ€™s all about fun â€“ whether itâ€™s gathering around the piano, shooting a round of pool, karaoke nights with the girls, or hosting a watch party. You can easily switch between the formal and informal dining depending on the mood, and you love to be a part of the party. The home features an impressive open to below design above the piano area, allowing music to flow through the home. Upstairs provides more space for entertaining with a large recreation room; 2 more bedrooms and large primary with expansive ensuite cap off the top floor. Additional features include: Modern elevation, SIDE ENTRY, electric fireplace, 9â€™™ basement foundation, upgraded iron spindle railing. \*photos are for representation only. Colors and finishing may vary, to be complete by November this year\*

Built in 2025

### Essential Information

MLS® #	E4458088
Price	\$624,900
Bedrooms	3
Bathrooms	2.50
Full Baths	2



Half Baths	1
Square Footage	2,070
Acres	0.00
Year Built	2025
Type	Single Family
Sub-Type	Detached Single Family
Style	2 Storey
Status	Active

### **Community Information**

Address	17326 98a Street
Area	Edmonton
Subdivision	Elsinore
City	Edmonton
County	ALBERTA
Province	AB
Postal Code	T5X 0M5

### **Amenities**

Amenities	See Remarks
Parking	Double Garage Attached

### **Interior**

Interior Features	ensuite bathroom
Appliances	Dishwasher-Built-In, Garage Control, Garage Opener, Hood Fan, Refrigerator, Stove-Electric, See Remarks
Heating	Forced Air-1, Natural Gas
Stories	2
Has Basement	Yes
Basement	Full, Unfinished

### **Exterior**

Exterior	Wood, Stone, Vinyl
Exterior Features	Golf Nearby, Landscaped, Park/Reserve, Playground Nearby, Public Transportation, Schools, Shopping Nearby, See Remarks
Roof	Asphalt Shingles
Construction	Wood, Stone, Vinyl
Foundation	Concrete Perimeter

### **Additional Information**

Date Listed September 16th, 2025

Days on Market 49

Zoning Zone 27

DATA IS DEEMED RELIABLE BUT IS NOT GUARANTEED ACCURATE BY THE REALTORS® ASSOCIATION OF EDMONTON. COPYRIGHT 2025 BY THE REALTORS® ASSOCIATION OF EDMONTON. ALL RIGHTS RESERVED. Trademarks are owned or controlled by the Canadian Real Estate Association (CREA) and identify real estate professionals who are members of CREA (REALTOR®, REALTORS®) and/or the quality of services they provide (MLS®, Multiple Listing Service®)

Listing information last updated on November 4th, 2025 at 9:48am MST