

\$745,000 - 3520 42 Avenue, Beaumont

MLS® #E4455906

\$745,000

6 Bedroom, 5.00 Bathroom, 1,743 sqft
Single Family on 0.00 Acres

Triomphe Estates, Beaumont, AB

Investor Alert! This beautifully designed home offers three separate living spaces, making it perfect for investors or families seeking extra flexibility. The main floor includes a bedroom and full bathroom, while a legal 1-bedroom basement suite with private entrance and a 1-bedroom garden suite add excellent rental income potential or mortgage helpers. What sets this opportunity apart is the ability to qualify for CMHC-insured financing when acquired together with the neighboring property. This rare side-by-side purchase option can open doors to longer amortizations, stronger cash flow, and superior financing terms. Located in a desirable, family-friendly neighborhood near schools, parks, and amenities, this property blends modern living with financial upside. Whether bought individually or paired with the adjoining home for CMHC qualification, itâ€™s a smart move for both investors and homeowners.



Built in 2025

Essential Information

| | |
|------------|-----------|
| MLS® # | E4455906 |
| Price | \$745,000 |
| Bedrooms | 6 |
| Bathrooms | 5.00 |
| Full Baths | 5 |

| | |
|----------------|------------------------|
| Square Footage | 1,743 |
| Acres | 0.00 |
| Year Built | 2025 |
| Type | Single Family |
| Sub-Type | Detached Single Family |
| Style | 2 Storey |
| Status | Active |

Community Information

| | |
|-------------|------------------|
| Address | 3520 42 Avenue |
| Area | Beaumont |
| Subdivision | Triomphe Estates |
| City | Beaumont |
| County | ALBERTA |
| Province | AB |
| Postal Code | T4X 3B3 |

Amenities

| | |
|-----------|---|
| Amenities | Carbon Monoxide Detectors, Ceiling 9 ft., Detectors Smoke |
| Parking | Double Garage Detached |

Interior

| | |
|-------------------|---|
| Interior Features | ensuite bathroom |
| Appliances | Garage Control, Garage Opener |
| Heating | Forced Air-1, Forced Air-2, Natural Gas |
| Stories | 4 |
| Has Suite | Yes |
| Has Basement | Yes |
| Basement | Full, Finished |

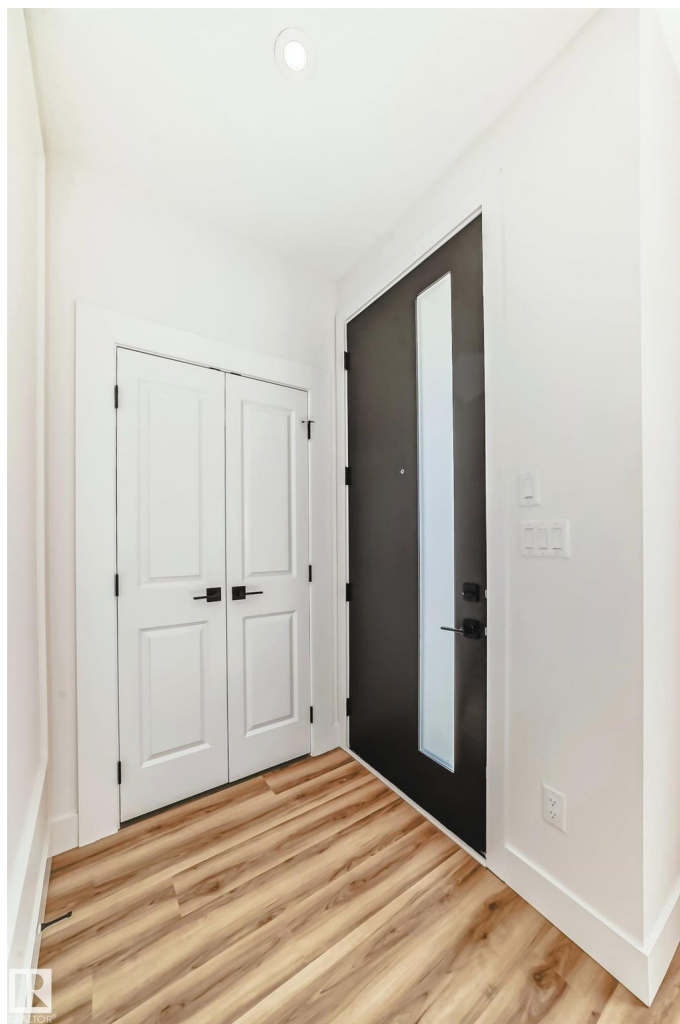
Exterior

| | |
|-------------------|---------------------------------|
| Exterior | Wood, Stone, Vinyl |
| Exterior Features | Airport Nearby, Shopping Nearby |
| Roof | Asphalt Shingles |
| Construction | Wood, Stone, Vinyl |
| Foundation | Concrete Perimeter |

Additional Information

| | |
|-------------|---------------------|
| Date Listed | September 3rd, 2025 |
|-------------|---------------------|

Days on Market 1
Zoning Zone 82



DATA IS DEEMED RELIABLE BUT IS NOT GUARANTEED ACCURATE BY THE REALTORS® ASSOCIATION OF EDMONTON. COPYRIGHT 2025 BY THE REALTORS® ASSOCIATION OF EDMONTON. ALL RIGHTS RESERVED. Trademarks are owned or controlled by the Canadian Real Estate Association (CREA) and identify real estate professionals who are members of CREA (REALTOR®, REALTORS®) and/or the quality of services they provide (MLS®, Multiple Listing Service®)

Listing information last updated on September 4th, 2025 at 11:02am MDT