

\$249,900 - 7208 7327 South Terwillegar Drive, Edmonton

MLS® #E4448876

\$249,900

2 Bedroom, 2.00 Bathroom, 1,055 sqft
Condo / Townhouse on 0.00 Acres

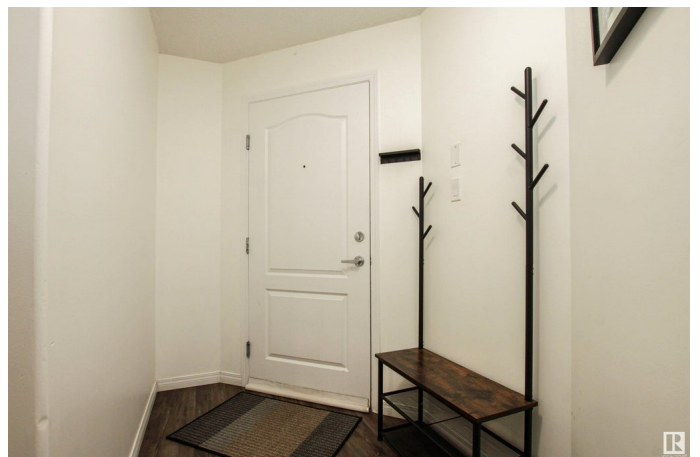
South Terwillegar, Edmonton, AB

Welcome to this beautifully maintained 2 bedroom, 2 bathroom condo featuring stylish newer vinyl plank flooring and a convenient in-suite washer and dryer. This southwest-facing corner unit offers an abundance of natural light throughout the day, creating a warm and inviting atmosphere. Enjoy the ease of 2 titled parking stalls, and a prime location just steps from shopping, groceries, and public transportation. Whether you're a first-time buyer, downsizer, or investor, this home combines comfort and convenience in one fantastic package!

Built in 2007

Essential Information

MLS® #	E4448876
Price	\$249,900
Bedrooms	2
Bathrooms	2.00
Full Baths	2
Square Footage	1,055
Acres	0.00
Year Built	2007
Type	Condo / Townhouse
Sub-Type	Lowrise Apartment



Style Single Level Apartment
Status Active

Community Information

Address 7208 7327 South Terwillegar Drive
Area Edmonton
Subdivision South Terwillegar
City Edmonton
County ALBERTA
Province AB
Postal Code T6R 0L8

Amenities

Amenities No Smoking Home, Parking-Extra, Parking-Visitor, Vinyl Windows, See Remarks, Natural Gas BBQ Hookup
Parking Spaces 2
Parking 2 Outdoor Stalls, Underground

Interior

Interior Features ensuite bathroom
Appliances Dishwasher-Built-In, Dryer, Microwave Hood Fan, Refrigerator, Stove-Electric, Washer, Window Coverings
Heating Hot Water, Natural Gas
of Stories 4
Stories 1
Has Basement Yes
Basement None, No Basement

Exterior

Exterior Wood, Stone, Vinyl
Exterior Features Airport Nearby, Fenced, Golf Nearby, No Through Road, Playground Nearby, Public Swimming Pool, Public Transportation, Schools, Shopping Nearby, Ski Hill Nearby, See Remarks
Roof Asphalt Shingles
Construction Wood, Stone, Vinyl
Foundation Concrete Perimeter

Additional Information

Date Listed July 21st, 2025
Days on Market 38

Zoning	Zone 14
Condo Fee	\$568

DATA IS DEEMED RELIABLE BUT IS NOT GUARANTEED ACCURATE BY THE REALTORS® ASSOCIATION OF EDMONTON. COPYRIGHT 2025 BY THE REALTORS® ASSOCIATION OF EDMONTON. ALL RIGHTS RESERVED. Trademarks are owned or controlled by the Canadian Real Estate Association (CREA) and identify real estate professionals who are members of CREA (REALTOR®, REALTORS®) and/or the quality of services they provide (MLS®, Multiple Listing Service®)

Listing information last updated on August 28th, 2025 at 2:02am MDT