

\$234,900 - 110 5404 7 Avenue, Edmonton

MLS® #E4448568

\$234,900

2 Bedroom, 2.00 Bathroom, 1,022 sqft

Condo / Townhouse on 0.00 Acres

Charlesworth, Edmonton, AB

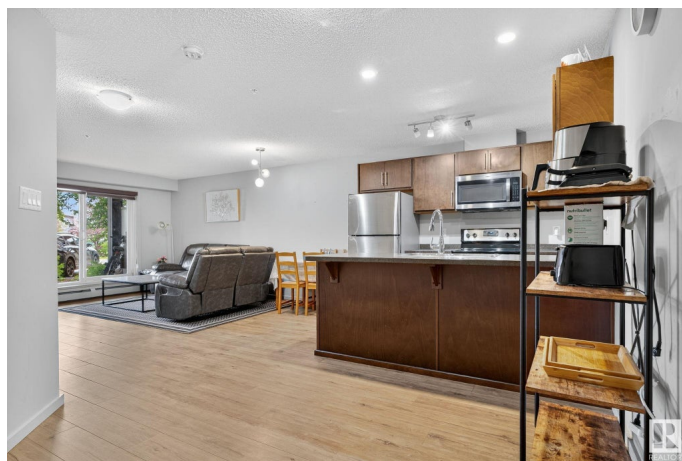
Step into this bright and impeccably maintained MAIN FLOOR unit in the sought-after Elements at Willowhaven featuring OVER 1000 SQFT. Proudly cared for by the owner, this spacious 2-bedroom, 2-bathroom condo offers 1021 sq ft of thoughtfully designed, open-concept living. At the heart of the home is a modern kitchen with , stainless steel appliances, and plenty of cabinetry perfect for both daily meals and hosting. The living and dining area showcase natural sunlight thanks to the west-facing exposure and flow seamlessly onto a private balcony for added outdoor enjoyment. The primary bedroom offers a beautiful ensuite and generous closet space. A second bedroom and full bathroom are conveniently positioned on the opposite side of the unit, offering excellent privacy for guests or roommates. Additional highlights include in-suite laundry, TWO PARKING STALLS including one underground and one surface stall. Situated in the vibrant community of Charlesworth. Located close to shopping and all amenities

Built in 2018

Essential Information

MLS® # E4448568

Price \$234,900



| | |
|----------------|------------------------|
| Bedrooms | 2 |
| Bathrooms | 2.00 |
| Full Baths | 2 |
| Square Footage | 1,022 |
| Acres | 0.00 |
| Year Built | 2018 |
| Type | Condo / Townhouse |
| Sub-Type | Lowrise Apartment |
| Style | Single Level Apartment |
| Status | Active |

Community Information

| | |
|-------------|-------------------|
| Address | 110 5404 7 Avenue |
| Area | Edmonton |
| Subdivision | Charlesworth |
| City | Edmonton |
| County | ALBERTA |
| Province | AB |
| Postal Code | T6K 2K4 |

Amenities

| | |
|-----------|----------------------------------------------------------------------------|
| Amenities | On Street Parking, No Animal Home, No Smoking Home, Parking-Visitor, Patio |
| Parking | Heated, Parkade, Underground |

Interior

| | |
|-------------------|----------------------------------------------------------------------------------------------------|
| Interior Features | ensuite bathroom |
| Appliances | Dishwasher-Built-In, Dryer, Oven-Microwave, Refrigerator, Stove-Electric, Washer, Window Coverings |
| Heating | Baseboard, Natural Gas |
| # of Stories | 4 |
| Stories | 4 |
| Has Basement | Yes |
| Basement | None, No Basement |

Exterior

| | |
|-------------------|--------------------------------------------------------------------------------------------------------------|
| Exterior | Wood, Stone, Vinyl |
| Exterior Features | Airport Nearby, Flat Site, Golf Nearby, Landscaped, Playground Nearby, Schools, Shopping Nearby, See Remarks |

| | |
|--------------|--------------------|
| Roof | See Remarks |
| Construction | Wood, Stone, Vinyl |
| Foundation | See Remarks |

School Information

| | |
|------------|------------------------|
| Elementary | Ellerslie Campus Shool |
| Middle | Ellerslie Campus Shool |
| High | Elder Dr Francis |

Additional Information

| | |
|----------------|-----------------|
| Date Listed | July 18th, 2025 |
| Days on Market | 53 |
| Zoning | Zone 53 |
| Condo Fee | \$547 |

DATA IS DEEMED RELIABLE BUT IS NOT GUARANTEED ACCURATE BY THE REALTORS® ASSOCIATION OF EDMONTON. COPYRIGHT 2025 BY THE REALTORS® ASSOCIATION OF EDMONTON. ALL RIGHTS RESERVED. Trademarks are owned or controlled by the Canadian Real Estate Association (CREA) and identify real estate professionals who are members of CREA (REALTOR®, REALTORS®) and/or the quality of services they provide (MLS®, Multiple Listing Service®)

Listing information last updated on September 8th, 2025 at 11:47pm MDT