

Courtesy Of David Lofthaug Of Bode

# \$361,900 - 14 710 Mattson Drive, Edmonton

MLS® #E4448126

**\$361,900**

3 Bedroom, 2.50 Bathroom, 1,299 sqft  
Condo / Townhouse on 0.00 Acres

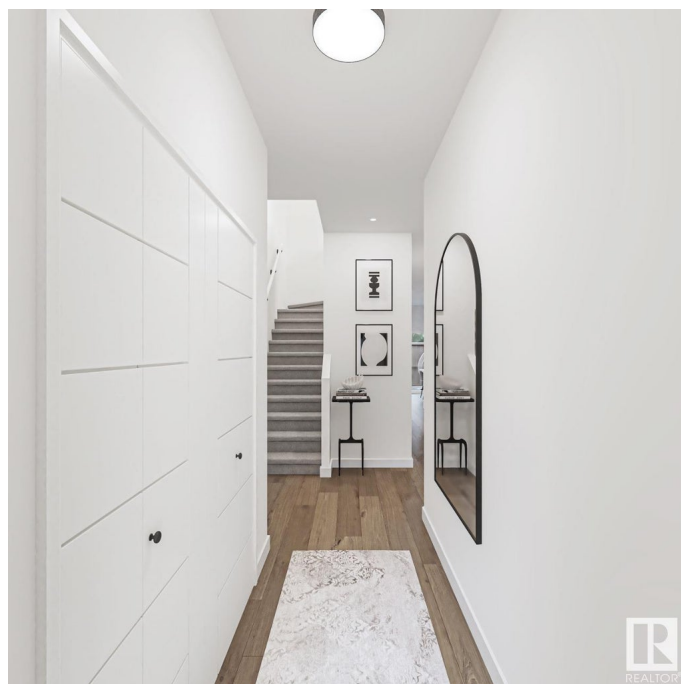
Mattson, Edmonton, AB

Welcome to this beautifully designed townhome featuring a modern Coastal Contemporary exterior and a single-car garage. Step inside to an open and inviting front foyer that sets the tone for a warm, welcoming interior. The spacious kitchen includes a flush eating bar, perfect for casual dining or entertaining, and flows seamlessly into a generous dining nook. The main floor also includes a mud room with convenient laundry access. Upstairs, a cozy loft offers the ideal space to relax or unwind. The primary bedroom boasts a 3-piece ensuite and a walk-in closet, offering both comfort and functionality. This home blends thoughtful design with everyday convenience, making it a perfect fit for modern living. Photos are representative.

Built in 2025

## Essential Information

MLS® #	E4448126
Price	\$361,900
Bedrooms	3
Bathrooms	2.50
Full Baths	2
Half Baths	1
Square Footage	1,299
Acres	0.00



Year Built	2025
Type	Condo / Townhouse
Sub-Type	Townhouse
Style	2 Storey
Status	Active

### **Community Information**

Address	14 710 Mattson Drive
Area	Edmonton
Subdivision	Mattson
City	Edmonton
County	ALBERTA
Province	AB
Postal Code	T6X 1A3

### **Amenities**

Amenities	Closet Organizers, No Animal Home, No Smoking Home, See Remarks
Parking Spaces	1
Parking	Single Garage Attached

### **Interior**

Interior Features	ensuite bathroom
Appliances	Hood Fan, Oven-Microwave
Heating	Forced Air-1, Natural Gas
Stories	2
Has Basement	Yes
Basement	Full, Unfinished

### **Exterior**

Exterior	Wood, Vinyl
Exterior Features	Public Transportation, Schools, Shopping Nearby
Roof	Asphalt Shingles
Construction	Wood, Vinyl
Foundation	Concrete Perimeter

### **Additional Information**

Date Listed	July 16th, 2025
Days on Market	54
Zoning	Zone 53

Condo Fee            \$100

DATA IS DEEMED RELIABLE BUT IS NOT GUARANTEED ACCURATE BY THE REALTORS® ASSOCIATION OF EDMONTON. COPYRIGHT 2025 BY THE REALTORS® ASSOCIATION OF EDMONTON. ALL RIGHTS RESERVED. Trademarks are owned or controlled by the Canadian Real Estate Association (CREA) and identify real estate professionals who are members of CREA (REALTOR®, REALTORS®) and/or the quality of services they provide (MLS®, Multiple Listing Service®)

Listing information last updated on September 8th, 2025 at 1:47pm MDT