

\$324,900 - 97 13320 124 Street, Edmonton

MLS® #E4448019

\$324,900

2 Bedroom, 2.00 Bathroom, 1,085 sqft

Condo / Townhouse on 0.00 Acres

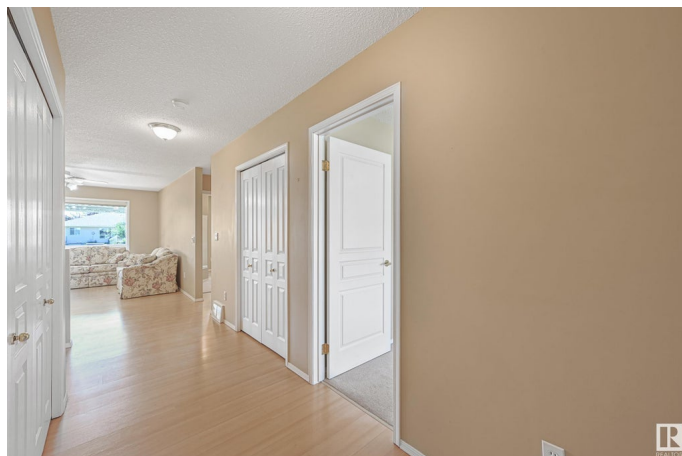
Kensington, Edmonton, AB

Fantastic adult bungalow (55+) in a prime location backing onto a beautiful park with a private, south-facing yard and large covered deck complete with privacy wall. This bright and airy home features large windows, spacious bedrooms, and two full bathrooms, including a primary suite with walk-in closet and ensuite. The kitchen offers light oak cabinetry, a matching buffet in the dining area, pantry, and plenty of storage. Main floor laundry adds convenience, and the fully finished basement includes a large great room and a generous hobby room. Recent updates include a new furnace and hot water tank. This home is in excellent condition and has been very well maintained. Low-maintenance and move-in ready. Quiet, peaceful setting yet close to all amenities, shopping, walking paths, transit, and more. A must-see for those seeking quality, comfort, and a park-like environment in a well-cared-for 55+ community.

Built in 1998

Essential Information

MLS® #	E4448019
Price	\$324,900
Bedrooms	2
Bathrooms	2.00



Full Baths	2
Square Footage	1,085
Acres	0.00
Year Built	1998
Type	Condo / Townhouse
Sub-Type	Half Duplex
Style	Bungalow
Status	Active

Community Information

Address	97 13320 124 Street
Area	Edmonton
Subdivision	Kensington
City	Edmonton
County	ALBERTA
Province	AB
Postal Code	T5L 5B7

Amenities

Amenities	On Street Parking, Deck, Detectors Smoke, No Animal Home, No Smoking Home, Parking-Visitor, Vinyl Windows, Wet Bar
Parking	Single Garage Attached

Interior

Interior Features	ensuite bathroom
Appliances	Dishwasher-Built-In, Garage Control, Garage Opener, Hood Fan, Refrigerator, Stacked Washer/Dryer, Stove-Electric, TV Wall Mount
Heating	Forced Air-1, Natural Gas
Stories	2
Has Basement	Yes
Basement	Full, Finished

Exterior

Exterior	Wood, Vinyl
Exterior Features	Backs Onto Park/Trees, Landscaped, Low Maintenance Landscape, Picnic Area, Private Setting, Public Transportation, Schools, Shopping Nearby
Roof	Asphalt Shingles
Construction	Wood, Vinyl

Foundation Concrete Perimeter

Additional Information

Date Listed July 16th, 2025
Days on Market 15
Zoning Zone 01
Condo Fee \$375

DATA IS DEEMED RELIABLE BUT IS NOT GUARANTEED ACCURATE BY THE REALTORS® ASSOCIATION OF EDMONTON. COPYRIGHT 2025 BY THE REALTORS® ASSOCIATION OF EDMONTON. ALL RIGHTS RESERVED.Trademarks are owned or controlled by the Canadian Real Estate Association (CREA) and identify real estate professionals who are members of CREA (REALTOR®, REALTORS®) and/or the quality of services they provide (MLS®, Multiple Listing Service®)
Listing information last updated on July 31st, 2025 at 9:02am MDT