

\$0 - 202 11830 111 Avenue, Edmonton

MLS® #E4446803

\$0

0 Bedroom, 0.00 Bathroom,
Retail on 0.00 Acres

Prince Rupert, Edmonton, AB

â€¢ Flexible main floor spaces suitable for a variety of professional/medical uses â€¢ Contemporary 2nd floor walk-up office â€¢ Excellent parking with 90Â± dedicated stalls â€¢ Strong Tenant mix featuring established restaurant/pub, medical users and more â€¢ Opportunity for pylon signage and/or exterior signage. â€¢ Great corner location fronting 119 St and 111 Avenue â€¢ Proximity to residential areas of Queen Mary Park, Westmount and Inglewood

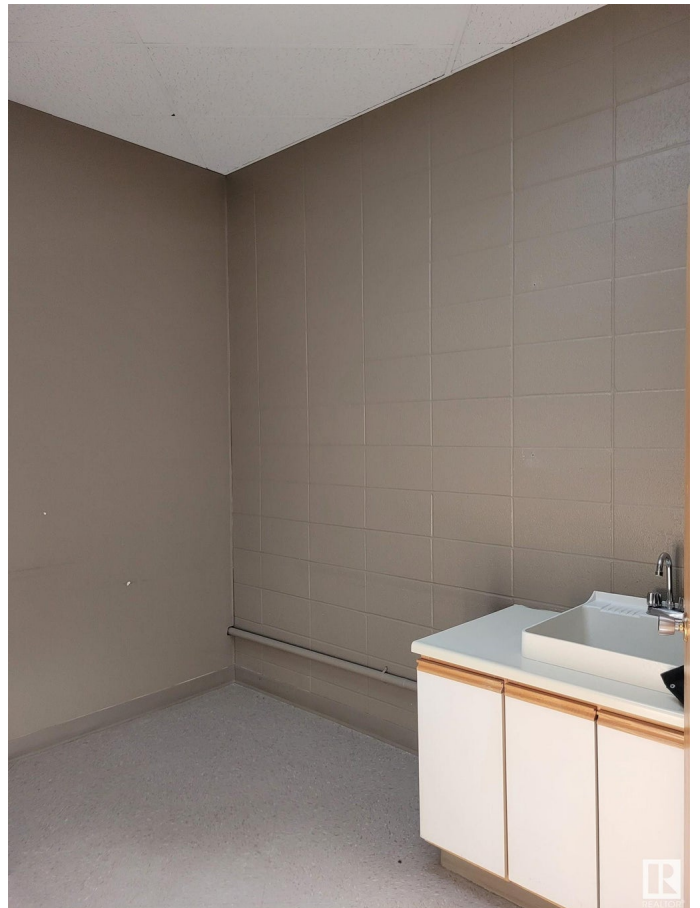
Built in 1977

Essential Information

| | |
|------------|----------|
| MLS® # | E4446803 |
| Bathrooms | 0.00 |
| Acres | 0.00 |
| Year Built | 1977 |
| Type | Retail |
| Status | Active |

Community Information

| | |
|-------------|----------------------|
| Address | 202 11830 111 Avenue |
| Area | Edmonton |
| Subdivision | Prince Rupert |
| City | Edmonton |
| County | ALBERTA |
| Province | AB |



Postal Code T5G 0E1

Exterior

Exterior Mixed
Construction Mixed

Additional Information

Date Listed July 9th, 2025
Days on Market 7
Zoning Zone 08

DATA IS DEEMED RELIABLE BUT IS NOT GUARANTEED ACCURATE BY THE REALTORS® ASSOCIATION OF EDMONTON. COPYRIGHT 2025 BY THE REALTORS® ASSOCIATION OF EDMONTON. ALL RIGHTS RESERVED.Trademarks are owned or controlled by the Canadian Real Estate Association (CREA) and identify real estate professionals who are members of CREA (REALTOR®, REALTORS®) and/or the quality of services they provide (MLS®, Multiple Listing Service®)
Listing information last updated on July 16th, 2025 at 6:32am MDT