

Courtesy Of Melissa N Botha Of Local Real Estate

**\$224,500 - N/A, Edmonton**

MLS® #E4446177

**\$224,500**

2 Bedroom, 2.00 Bathroom, 957 sqft  
Condo / Townhouse on 0.00 Acres

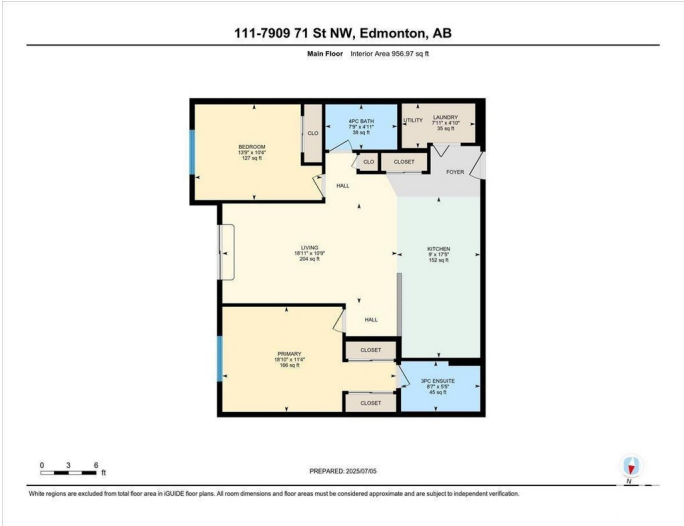
King Edward Park, Edmonton, AB

Welcome to Urban Village on Whyte! This move-in-ready 2-bedroom condo offers unbeatable access to the Anthony Henday, Sherwood Park, downtown, and the south side. Originally the show suite, it features granite countertops, AC, in-suite laundry, and a massive private patio. Freshly cleaned carpets and a spacious layout make it truly turn-key. Enjoy resort-style amenities including an indoor swimming pool, hot tub, steam room, sauna, one of the largest gyms youâ€™™ll find in any complex, a party room, and a quiet library-style loungeâ€™™better than most rec centers! Includes one underground parking stall with storage directly in front,. Quick possession available. What more could you ask for?

Built in 2008

**Essential Information**

MLS® #	E4446177
Price	\$224,500
Bedrooms	2
Bathrooms	2.00
Full Baths	2
Square Footage	957
Acres	0.00
Year Built	2008



Type	Condo / Townhouse
Sub-Type	Lowrise Apartment
Style	Single Level Apartment
Status	Active

### Community Information

Address	N/A
Area	Edmonton
Subdivision	King Edward Park
City	Edmonton
County	ALBERTA
Province	AB
Postal Code	T6B 3P5

### Amenities

Amenities	Air Conditioner, Bar, Closet Organizers, Deck, No Animal Home, No Smoking Home, Parking-Visitor, Party Room, Sauna; Swirlpool; Steam, Secured Parking, Security Door, Social Rooms, Vinyl Windows, Storage Cage, Natural Gas BBQ Hookup
Parking	Heated, Insulated, Parkade, Stall, Underground

### Interior

Interior Features	ensuite bathroom
Appliances	Air Conditioning-Central, Dishwasher-Built-In, Refrigerator, Stacked Washer/Dryer, Stove-Electric, Window Coverings
Heating	Fan Coil, Natural Gas
# of Stories	4
Stories	1
Has Basement	Yes
Basement	None, No Basement

### Exterior

Exterior	Wood, Stucco
Exterior Features	Public Transportation
Roof	EPDM Membrane
Construction	Wood, Stucco
Foundation	Concrete Perimeter

### Additional Information

Date Listed	July 5th, 2025
-------------	----------------

Days on Market	2
Zoning	Zone 17
Condo Fee	\$523

DATA IS DEEMED RELIABLE BUT IS NOT GUARANTEED ACCURATE BY THE REALTORS® ASSOCIATION OF EDMONTON. COPYRIGHT 2025 BY THE REALTORS® ASSOCIATION OF EDMONTON. ALL RIGHTS RESERVED. Trademarks are owned or controlled by the Canadian Real Estate Association (CREA) and identify real estate professionals who are members of CREA (REALTOR®, REALTORS®) and/or the quality of services they provide (MLS®, Multiple Listing Service®)

Listing information last updated on July 7th, 2025 at 7:17am MDT