

\$229,900 - 10317 132 Avenue, Edmonton

MLS® #E4446160

\$229,900

3 Bedroom, 2.00 Bathroom, 1,263 sqft

Single Family on 0.00 Acres

Lauderdale, Edmonton, AB

Gorgeous Home offers elegance, magnificent living spaces. This home features 1263 SQFT, 3 bed and 2 Full baths. Stunning curb appeal with vinyl exterior. Inside the front entry boasts an impressive living area. The Chef's Kitchen is outstanding from every angle, showcases tasteful finishes, custom cabinetry. A Sunroom off of the kitchen adds to the footprint of the home. 3 large bedrooms, Full Bathroom with a gorgeous Master Suite. The Finished Basement is perfect for entertaining with a Large Living Room, bathroom and a Large Laundry Room. Upgrade's include: Kitchen, Bedroom Windows, Vinyl Siding, Roof, Tank. The South Facing back yard boasts a private partially covered patio, offers plenty of space, great for entertaining. The Front has direct access to a school field. Plenty of visitor parking on the sides and quick walking distance to the unit. NO CONDO FEE's. In a Great Location close to abundance of schools, playgrounds, shopping centres and public transport

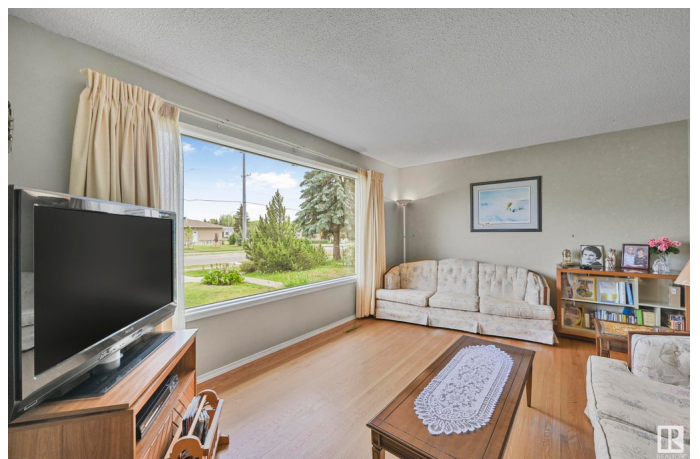
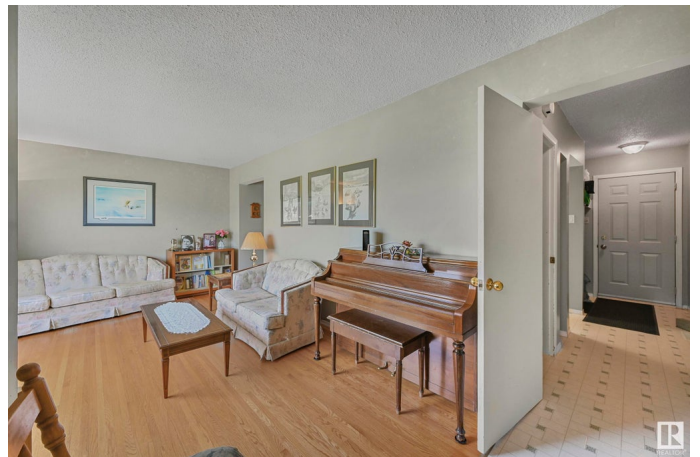
Built in 1961

Essential Information

MLS® # E4446160

Price \$229,900

Bedrooms 3



Bathrooms	2.00
Full Baths	2
Square Footage	1,263
Acres	0.00
Year Built	1961
Type	Single Family
Sub-Type	Residential Attached
Style	2 Storey
Status	Active

Community Information

Address	10317 132 Avenue
Area	Edmonton
Subdivision	Lauderdale
City	Edmonton
County	ALBERTA
Province	AB
Postal Code	T5E 0Y8

Amenities

Amenities	See Remarks
Parking	Single Garage Detached

Interior

Appliances	Dishwasher-Built-In, Dryer, Freezer, Garage Opener, Refrigerator, Stove-Electric, Washer, Window Coverings
Heating	Forced Air-1, Natural Gas
Stories	3
Has Basement	Yes
Basement	Full, Finished

Exterior

Exterior	Wood, Vinyl
Exterior Features	Fenced, Public Swimming Pool, Public Transportation, Schools, Shopping Nearby
Roof	Tar & Gravel
Construction	Wood, Vinyl
Foundation	Concrete Perimeter

Additional Information

Date Listed July 4th, 2025

Days on Market 2

Zoning Zone 01

DATA IS DEEMED RELIABLE BUT IS NOT GUARANTEED ACCURATE BY THE REALTORS® ASSOCIATION OF EDMONTON. COPYRIGHT 2025 BY THE REALTORS® ASSOCIATION OF EDMONTON. ALL RIGHTS RESERVED. Trademarks are owned or controlled by the Canadian Real Estate Association (CREA) and identify real estate professionals who are members of CREA (REALTOR®, REALTORS®) and/or the quality of services they provide (MLS®, Multiple Listing Service®)

Listing information last updated on July 6th, 2025 at 6:32pm MDT