

## \$778,000 - 972 Wallbridge Place, Edmonton

MLS® #E4446022

**\$778,000**

4 Bedroom, 3.00 Bathroom, 1,944 sqft

Single Family on 0.00 Acres

Oleskiw, Edmonton, AB

Discover your dream home in the highly sought-after "The Country Club" neighborhood of Oleskiw, Edmonton. This spacious, fully renovated bungalow offers over 3,700 sq ft of luxurious living space, perfectly blending elegance and functionality. Step inside to a sun-drenched living room, boasting large windows updated in 2016 for abundant natural light. The recent renovations truly elevate this property, featuring a stunning gourmet kitchen with granite countertops and stainless steel appliances. Indulge in the primary en-suite bathroom, a true spa-like retreat with heated floors, ideal for chilly mornings. The fully finished basement, complete with new carpeting (2024), is designed for entertaining. It includes a built-in cabinet and two wine/beverage coolers, making it the perfect spot for social gatherings. With two additional bedrooms and a convenient Jack-and-Jill bathroom, there's ample space for family and guests. Enjoy an unparalleled lifestyle in this prime location.

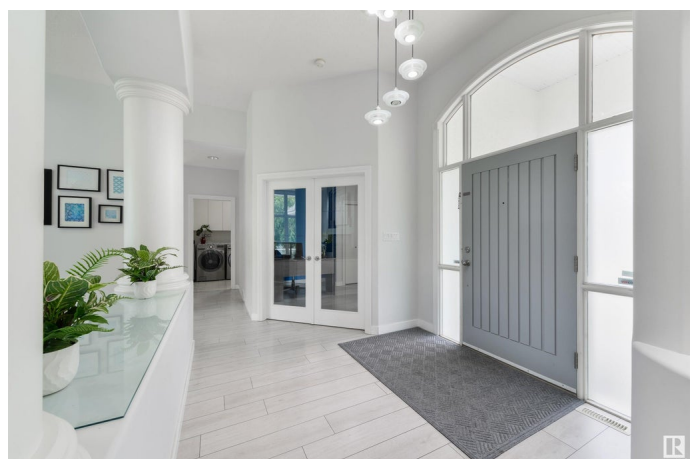
Built in 1997

### Essential Information

MLS® # E4446022

Price \$778,000

Bedrooms 4



Bathrooms	3.00
Full Baths	3
Square Footage	1,944
Acres	0.00
Year Built	1997
Type	Single Family
Sub-Type	Detached Single Family
Style	Bungalow
Status	Active

### Community Information

Address	972 Wallbridge Place
Area	Edmonton
Subdivision	Oleskiw
City	Edmonton
County	ALBERTA
Province	AB
Postal Code	T6M 2L7

### Amenities

Amenities	Deck, Detectors Smoke, Fire Pit, No Animal Home, No Smoking Home, Vaulted Ceiling, Vinyl Windows
Parking Spaces	4
Parking	Double Garage Attached

### Interior

Interior Features	ensuite bathroom
Appliances	Dishwasher-Built-In, Dryer, Hood Fan, Refrigerator, Stove-Electric, Washer, Wine/Beverage Cooler, Projector
Heating	Forced Air-2, Natural Gas
Fireplace	Yes
Fireplaces	Glass Door
Stories	2
Has Basement	Yes
Basement	Full, Finished

### Exterior

Exterior	Wood, Stucco
Exterior Features	Cul-De-Sac, Fenced, Low Maintenance Landscape, Playground Nearby,

	Public Transportation, See Remarks
Roof	Cedar Shakes
Construction	Wood, Stucco
Foundation	Concrete Perimeter

### **School Information**

Elementary	Patricia Heights
Middle	Hillcrest Jr High School
High	Jasper Place High School

### **Additional Information**

Date Listed	July 3rd, 2025
Days on Market	3
Zoning	Zone 22

DATA IS DEEMED RELIABLE BUT IS NOT GUARANTEED ACCURATE BY THE REALTORS® ASSOCIATION OF EDMONTON. COPYRIGHT 2025 BY THE REALTORS® ASSOCIATION OF EDMONTON. ALL RIGHTS RESERVED. Trademarks are owned or controlled by the Canadian Real Estate Association (CREA) and identify real estate professionals who are members of CREA (REALTOR®, REALTORS®) and/or the quality of services they provide (MLS®, Multiple Listing Service®)

Listing information last updated on July 6th, 2025 at 8:47pm MDT