

\$619,900 - 7733 Ellesmere Lane, Sherwood Park

MLS® #E4445673

\$619,900

4 Bedroom, 3.50 Bathroom, 1,622 sqft

Single Family on 0.00 Acres

Emerald Hills, Sherwood Park, AB

Beautiful 2-storey in desirable Emerald Hills with a FULLY FINISHED BASEMENT! The main floor offers a bright, open layout perfect for entertaining. The kitchen features ample cabinet/counter space, raised eating bar & UPGRADED APPLIANCES. Upgraded vinyl FLOORING on the main floor and in all the washrooms. Dining area overlooks the PROFESSIONALLY LANDSCAPED YARD through patio doors. Renovated MAIN-FLOOR LAUNDRY & 2pc bath complete the main. Upstairs, the MASSIVE primary suite boasts a huge walk-in closet & full ensuite. Two more bedrooms with BUILT-IN CLOSET ORGANIZERS & a 4pc bath finish the level. The basement is PROFESSIONALLY DEVELOPED with a 4th bedroom, full bath with TILED SHOWER & large rec room. Fresh interior paint & OVERSIZED GARAGE for added convenience. Stay cool with A/C! Backyard is an OASISâ€”huge deck with privacy wall/pergola, HOT TUB, & custom shed. This home has it ALL!

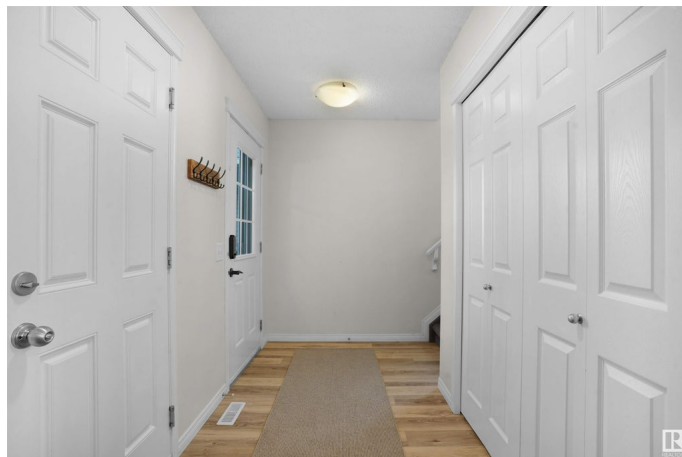
Built in 2013

Essential Information

MLS® # E4445673

Price \$619,900

Bedrooms 4



Bathrooms	3.50
Full Baths	3
Half Baths	1
Square Footage	1,622
Acres	0.00
Year Built	2013
Type	Single Family
Sub-Type	Detached Single Family
Style	2 Storey
Status	Active

Community Information

Address	7733 Ellesmere Lane
Area	Sherwood Park
Subdivision	Emerald Hills
City	Sherwood Park
County	ALBERTA
Province	AB
Postal Code	T8H 0P7

Amenities

Amenities	Air Conditioner, Closet Organizers, Deck, Gazebo, Hot Tub, Parking-Extra, See Remarks
Parking Spaces	4
Parking	Double Garage Attached

Interior

Interior Features	ensuite bathroom
Appliances	Dishwasher-Built-In, Dryer, Microwave Hood Fan, Refrigerator, Storage Shed, Stove-Electric, Washer, Window Coverings, Hot Tub
Heating	Forced Air-1, Natural Gas
Fireplace	Yes
Fireplaces	Glass Door, Heatilator/Fan, Mantel
Stories	2
Has Basement	Yes
Basement	Full, Finished

Exterior

Exterior	Wood, Stone, Vinyl
----------	--------------------

Exterior Features	Fenced, Flat Site, Schools, Shopping Nearby, See Remarks
Roof	Asphalt Shingles
Construction	Wood, Stone, Vinyl
Foundation	Concrete Perimeter

Additional Information

Date Listed	July 3rd, 2025
Days on Market	10
Zoning	Zone 25

DATA IS DEEMED RELIABLE BUT IS NOT GUARANTEED ACCURATE BY THE REALTORS® ASSOCIATION OF EDMONTON. COPYRIGHT 2025 BY THE REALTORS® ASSOCIATION OF EDMONTON. ALL RIGHTS RESERVED.Trademarks are owned or controlled by the Canadian Real Estate Association (CREA) and identify real estate professionals who are members of CREA (REALTOR®, REALTORS®) and/or the quality of services they provide (MLS®, Multiple Listing Service®)

Listing information last updated on July 13th, 2025 at 4:47am MDT