

\$199,000 - 42 2505 42 Street, Edmonton

MLS® #E4443499

\$199,000

4 Bedroom, 2.00 Bathroom, 913 sqft

Condo / Townhouse on 0.00 Acres

Bisset, Edmonton, AB

Fantastic opportunity in Bisset. This 913sq ft bungalow features a great layout with a total of 4 bedrooms 2 bathrooms, 2 living areas, partial finished basement, and so much more. This home is in a great location, close to shopping, schools and public transportation. A gem in Bisset with great value.

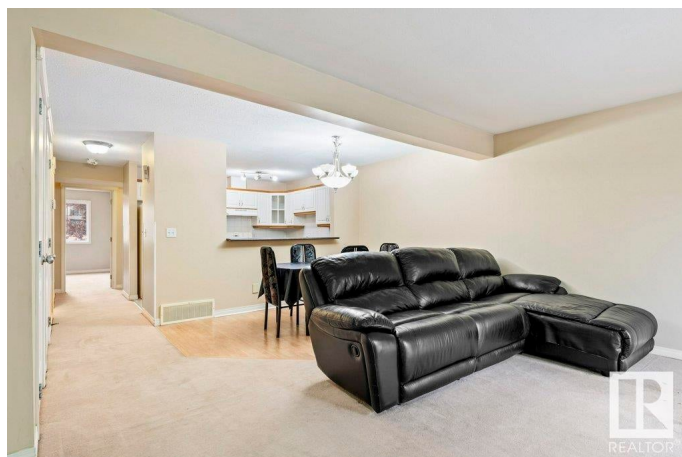
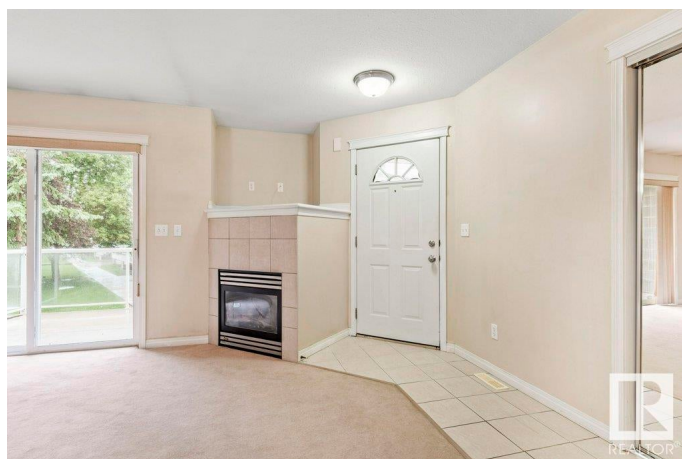
Built in 2002

Essential Information

| | |
|----------------|-------------------|
| MLS® # | E4443499 |
| Price | \$199,000 |
| Bedrooms | 4 |
| Bathrooms | 2.00 |
| Full Baths | 2 |
| Square Footage | 913 |
| Acres | 0.00 |
| Year Built | 2002 |
| Type | Condo / Townhouse |
| Sub-Type | Townhouse |
| Style | Bungalow |
| Status | Active |

Community Information

| | |
|-------------|-------------------|
| Address | 42 2505 42 Street |
| Area | Edmonton |
| Subdivision | Bisset |



| | |
|-------------|----------|
| City | Edmonton |
| County | ALBERTA |
| Province | AB |
| Postal Code | T6L 7G8 |

Amenities

| | |
|-----------|---|
| Amenities | Carbon Monoxide Detectors, Deck, Front Porch, Parking-Visitor |
| Parking | Stall |

Interior

| | |
|--------------|---|
| Appliances | Dryer, Microwave Hood Fan, Refrigerator, Stove-Electric, Washer |
| Heating | Forced Air-1, Natural Gas |
| Stories | 2 |
| Has Basement | Yes |
| Basement | Full, Partially Finished |

Exterior

| | |
|-------------------|--|
| Exterior | Wood, Vinyl |
| Exterior Features | Flat Site, Golf Nearby, Landscaped, Low Maintenance Landscape, Picnic Area, Playground Nearby, Public Transportation, Schools, Shopping Nearby |
| Roof | Asphalt Shingles |
| Construction | Wood, Vinyl |
| Foundation | Concrete Perimeter |

Additional Information

| | |
|----------------|-----------------|
| Date Listed | June 20th, 2025 |
| Days on Market | 11 |
| Zoning | Zone 29 |
| Condo Fee | \$381 |

DATA IS DEEMED RELIABLE BUT IS NOT GUARANTEED ACCURATE BY THE REALTORS® ASSOCIATION OF EDMONTON. COPYRIGHT 2025 BY THE REALTORS® ASSOCIATION OF EDMONTON. ALL RIGHTS RESERVED. Trademarks are owned or controlled by the Canadian Real Estate Association (CREA) and identify real estate professionals who are members of CREA (REALTOR®, REALTORS®) and/or the quality of services they provide (MLS®, Multiple Listing Service®)

Listing information last updated on July 1st, 2025 at 4:47pm MDT