

# \$419,990 - 9715 154 Street, Edmonton

MLS® #E4442522

**\$419,990**

0 Bedroom, 0.00 Bathroom,  
Single Family on 0.00 Acres

West Jasper Place, Edmonton, AB

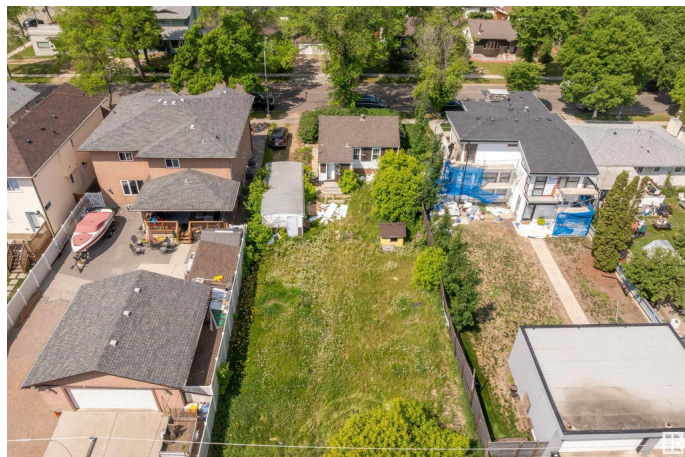
Welcome to West Jasper Place! This 687 sq/m lot (50x148) offers endless potential in the heart of Edmonton's west end. Ideal for developers or investors to build a 6 or 8 unit multi-family under the MLI Select program, two single-family homes or front/back duplexes. The owner is actively working with the City on a split title, creating two 25x148 lots perfect for your next project. Demolition plans are already in motion, making this a build-ready opportunity. West-facing frontage, mature neighborhood, and close to transit, schools, and amenities. A prime location with unmatched flexibility!

## Essential Information

|           |                 |
|-----------|-----------------|
| MLS® #    | E4442522        |
| Price     | \$419,990       |
| Bathrooms | 0.00            |
| Acres     | 0.00            |
| Type      | Single Family   |
| Sub-Type  | Vacant Lot/Land |
| Status    | Active          |

## Community Information

|             |                   |
|-------------|-------------------|
| Address     | 9715 154 Street   |
| Area        | Edmonton          |
| Subdivision | West Jasper Place |



|             |          |
|-------------|----------|
| City        | Edmonton |
| County      | ALBERTA  |
| Province    | AB       |
| Postal Code | T5P 2G4  |

### Exterior

|                   |   |
|-------------------|---|
| Exterior Features | Back Lane, Flat Site, Level Land, Shopping Nearby, Subdividable Lot,<br>See Remarks |
|-------------------|---|

|                 |          |
|-----------------|----------|
| Lot Description | 50 x 148 |
|-----------------|----------|

### Additional Information

|             |                 |
|-------------|-----------------|
| Date Listed | June 14th, 2025 |
|-------------|-----------------|

|                |   |
|----------------|---|
| Days on Market | 3 |
|----------------|---|

|        |         |
|--------|---------|
| Zoning | Zone 22 |
|--------|---------|

DATA IS DEEMED RELIABLE BUT IS NOT GUARANTEED ACCURATE BY THE REALTORS® ASSOCIATION OF EDMONTON. COPYRIGHT 2025 BY THE REALTORS® ASSOCIATION OF EDMONTON. ALL RIGHTS RESERVED. Trademarks are owned or controlled by the Canadian Real Estate Association (CREA) and identify real estate professionals who are members of CREA (REALTOR®, REALTORS®) and/or the quality of services they provide (MLS®, Multiple Listing Service®)

Listing information last updated on June 16th, 2025 at 11:47pm MDT