

\$399,900 - 56 Gilmore Way, Spruce Grove

MLS® #E4441947

\$399,900

3 Bedroom, 2.50 Bathroom, 1,239 sqft

Single Family on 0.00 Acres

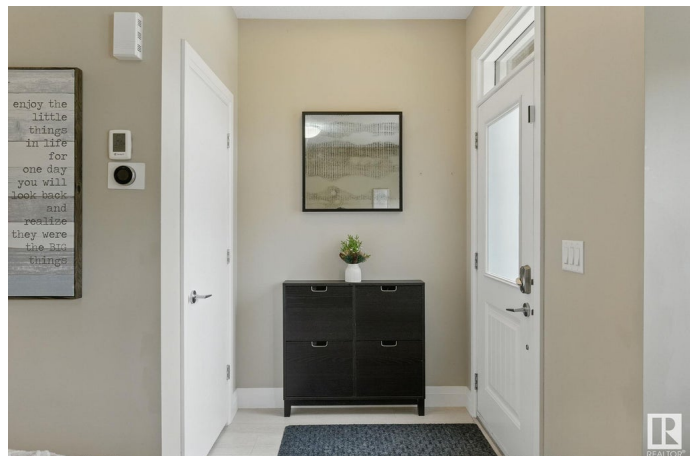
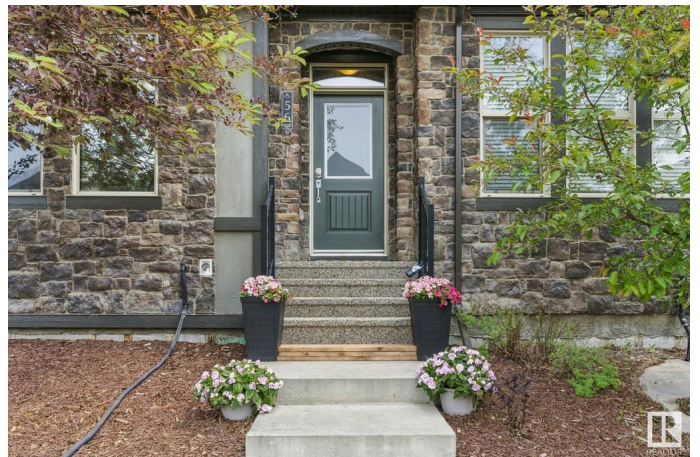
Greenbury, Spruce Grove, AB

Heart of Greenbury, just steps away from scenic WALKING TRAILS, the SPLASH PARK, and all the excitement of Jubilee Park. Step inside to a bright, open-concept main floor designed for both entertaining and everyday comfort. With 9 FT CEILINGS, large windows, and ample counter space, the space feels airy and welcoming, ideal for hosting gatherings or relaxing family dinners. Upstairs, youâ€™ll find spacious bedrooms, including a primary retreat complete with a 4-piece en-suite, offering privacy and comfort for busy mornings or winding down after a long day. The basement is ready for your visionâ€”perfect for future development or generous storage space. Enjoy your low-maintenance, east-facing backyard, ideal for morning coffees or warm summer evenings. Plus, the double detached garage is large enough to fit a half-ton pickup truck, and central A/C will keep you cool all season long. All of this is within walking distance to Prescott School

Built in 2014

Essential Information

MLS® #	E4441947
Price	\$399,900
Bedrooms	3



Bathrooms	2.50
Full Baths	2
Half Baths	1
Square Footage	1,239
Acres	0.00
Year Built	2014
Type	Single Family
Sub-Type	Residential Attached
Style	2 Storey
Status	Active

Community Information

Address	56 Gilmore Way
Area	Spruce Grove
Subdivision	Greenbury
City	Spruce Grove
County	ALBERTA
Province	AB
Postal Code	T7X 0A7

Amenities

Amenities	Air Conditioner, Deck, Fire Pit
Parking	Double Garage Detached

Interior

Interior Features	ensuite bathroom
Appliances	Air Conditioning-Central, Alarm/Security System, Dishwasher-Built-In, Dryer, Garage Control, Garage Opener, Microwave Hood Fan, Refrigerator, Stove-Countertop Electric, Washer, Window Coverings
Heating	Forced Air-1, Natural Gas
Stories	2
Has Basement	Yes
Basement	Full, Unfinished

Exterior

Exterior	Wood, Stone, Vinyl
Exterior Features	Landscaped, Low Maintenance Landscape, Playground Nearby, Schools, Shopping Nearby
Roof	Asphalt Shingles

Construction	Wood, Stone, Vinyl
Foundation	Concrete Perimeter

Additional Information

Date Listed	June 12th, 2025
Days on Market	5
Zoning	Zone 91

DATA IS DEEMED RELIABLE BUT IS NOT GUARANTEED ACCURATE BY THE REALTORS® ASSOCIATION OF EDMONTON. COPYRIGHT 2025 BY THE REALTORS® ASSOCIATION OF EDMONTON. ALL RIGHTS RESERVED.Trademarks are owned or controlled by the Canadian Real Estate Association (CREA) and identify real estate professionals who are members of CREA (REALTOR®, REALTORS®) and/or the quality of services they provide (MLS®, Multiple Listing Service®)

Listing information last updated on June 17th, 2025 at 7:17am MDT