

\$250,000 - 308 10147 112 Street, Edmonton

MLS® #E4441155

\$250,000

2 Bedroom, 2.00 Bathroom, 1,012 sqft

Condo / Townhouse on 0.00 Acres

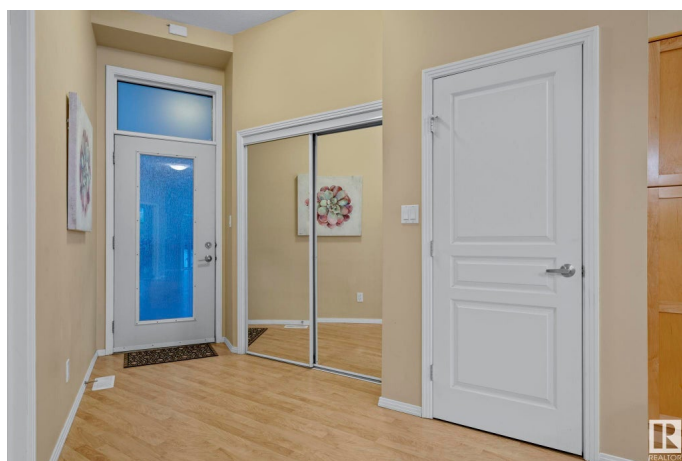
WÃ@hkwÃªntÃ´win, Edmonton, AB

The one you have been waiting for - in the heart of city! Welcome to Gates on Twelfth where urban living meets comfort and style. This bright and spacious 2 bedroom/ 2 bathroom condo features 10' ceilings, massive windows, and an open-concept floor plan. You'll love the central kitchen with plenty of cabinetry and long island - perfect for entertaining. The primary suite offers a walk-in closet and 3pc ensuite with extended counter space. Enjoy your morning coffee while watching the sunrise from your east-facing balcony. A second generous bedroom, 4pc bathroom and in-suite laundry for your convenience. Enjoy secure underground parking, extra storage, and unbeatable walkability to coffee shops, boutiques, groceries, the LRT, and Edmontonâ€™s stunning River Valley trails. With easy access to downtown, U of A, and MacEwan, this location truly has it all. Welcome home!

Built in 2004

Essential Information

MLS® #	E4441155
Price	\$250,000
Bedrooms	2
Bathrooms	2.00
Full Baths	2



Square Footage	1,012
Acres	0.00
Year Built	2004
Type	Condo / Townhouse
Sub-Type	Lowrise Apartment
Style	Single Level Apartment
Status	Active

Community Information

Address	308 10147 112 Street
Area	Edmonton
Subdivision	WÃ©hkwÃ©ntÃ©win
City	Edmonton
County	ALBERTA
Province	AB
Postal Code	T5K 1M1

Amenities

Amenities	Off Street Parking, Security Door
Parking	Heated, Parkade, Underground

Interior

Interior Features	ensuite bathroom
Appliances	Dishwasher-Built-In, Microwave Hood Fan, Refrigerator, Stacked Washer/Dryer, Stove-Electric
Heating	Forced Air-1, Natural Gas
# of Stories	5
Stories	1
Has Basement	Yes
Basement	None, No Basement

Exterior

Exterior	Wood, Stucco
Exterior Features	Gated Community, Playground Nearby, Public Transportation, Schools, Shopping Nearby, View Downtown
Roof	Flat, SBS Roofing System
Construction	Wood, Stucco
Foundation	Concrete Perimeter

School Information

Elementary	Wihkwentowin / St.Catherine
Middle	Westminster / St.Catherine
High	Victoria / St.Joseph

Additional Information

Date Listed	June 7th, 2025
Days on Market	82
Zoning	Zone 12
Condo Fee	\$458

DATA IS DEEMED RELIABLE BUT IS NOT GUARANTEED ACCURATE BY THE REALTORS® ASSOCIATION OF EDMONTON. COPYRIGHT 2025 BY THE REALTORS® ASSOCIATION OF EDMONTON. ALL RIGHTS RESERVED. Trademarks are owned or controlled by the Canadian Real Estate Association (CREA) and identify real estate professionals who are members of CREA (REALTOR®, REALTORS®) and/or the quality of services they provide (MLS®, Multiple Listing Service®)

Listing information last updated on August 28th, 2025 at 3:47am MDT