

\$325,000 - 5 West Terrace Place, Spruce Grove

MLS® #E4440400

\$325,000

3 Bedroom, 1.50 Bathroom, 1,084 sqft

Single Family on 0.00 Acres

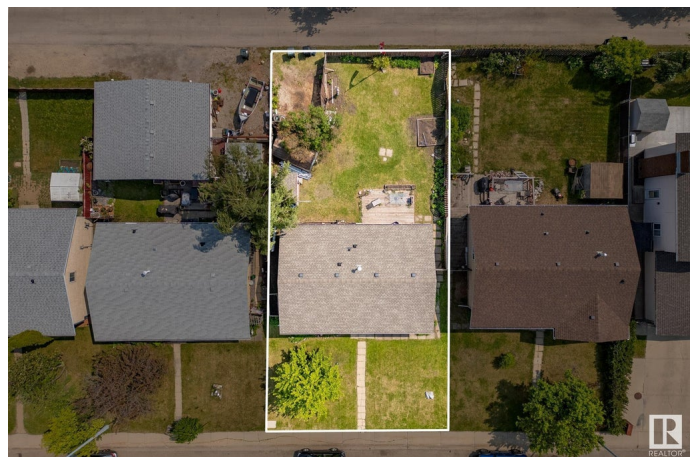
West Grove, Spruce Grove, AB

Welcome to this charming bungalow nestled in a family-friendly community of Spruce Grove! Just under 1100 sq ft, this home offers 3 spacious bedrooms on the main floor, including a large primary with a 2-piece ensuite. The main level also features a bright living space and a 4-piece main bath. Downstairs, the partly finished basement includes both the layout of a recreation room, family room and flex room that include a den or another bedroom. Enjoy the beautifully landscaped yard with numerous perennial beds, a garden, and plenty of room to build a garage with convenient back alley access. The large fenced yard is ideal for kids and pets. Located close to the scenic Heritage Trail system that winds throughout Spruce Grove. Major updates include shingles, furnace, hot water tank, and windowsâ€”providing peace of mind for years to come. A fantastic opportunity to settle into a well-maintained home in a great location!

Built in 1980

Essential Information

| | |
|-----------|-----------|
| MLS® # | E4440400 |
| Price | \$325,000 |
| Bedrooms | 3 |
| Bathrooms | 1.50 |



| | |
|----------------|------------------------|
| Full Baths | 1 |
| Half Baths | 1 |
| Square Footage | 1,084 |
| Acres | 0.00 |
| Year Built | 1980 |
| Type | Single Family |
| Sub-Type | Detached Single Family |
| Style | Bungalow |
| Status | Active |

Community Information

| | |
|-------------|----------------------|
| Address | 5 West Terrace Place |
| Area | Spruce Grove |
| Subdivision | West Grove |
| City | Spruce Grove |
| County | ALBERTA |
| Province | AB |
| Postal Code | T7X 1T7 |

Amenities

| | |
|----------------|--|
| Amenities | Off Street Parking, On Street Parking, Deck, Detectors Smoke, No Animal Home |
| Parking Spaces | 4 |
| Parking | 2 Outdoor Stalls, Front/Rear Drive Access |

Interior

| | |
|-------------------|---|
| Interior Features | ensuite bathroom |
| Appliances | Dishwasher-Built-In, Dryer, Fan-Ceiling, Refrigerator, Storage Shed, Stove-Electric, Washer, Window Coverings |
| Heating | Forced Air-1, Natural Gas |
| Stories | 2 |
| Has Basement | Yes |
| Basement | Full, Partially Finished |

Exterior

| | |
|-------------------|---|
| Exterior | Wood, Metal |
| Exterior Features | Back Lane, Fenced, Golf Nearby, Landscaped, No Through Road, Paved Lane, Picnic Area, Playground Nearby, Schools, Shopping Nearby, Vegetable Garden |

| | |
|--------------|--------------------|
| Roof | Asphalt Shingles |
| Construction | Wood, Metal |
| Foundation | Concrete Perimeter |

School Information

| | |
|------------|------------------------|
| Elementary | Millgrove |
| Middle | Greystone Centennial |
| High | Spruce Grove Composite |

Additional Information

| | |
|----------------|----------------|
| Date Listed | June 3rd, 2025 |
| Days on Market | 14 |
| Zoning | Zone 91 |

DATA IS DEEMED RELIABLE BUT IS NOT GUARANTEED ACCURATE BY THE REALTORS® ASSOCIATION OF EDMONTON. COPYRIGHT 2025 BY THE REALTORS® ASSOCIATION OF EDMONTON. ALL RIGHTS RESERVED. Trademarks are owned or controlled by the Canadian Real Estate Association (CREA) and identify real estate professionals who are members of CREA (REALTOR®, REALTORS®) and/or the quality of services they provide (MLS®, Multiple Listing Service®)

Listing information last updated on June 17th, 2025 at 2:32pm MDT