

Courtesy Of Taminder S Sahota Of MaxWell Polaris

\$165,000 - 207 530 Watt Boulevard, Edmonton

MLS® #E4439804

\$165,000

1 Bedroom, 1.00 Bathroom, 570 sqft
Condo / Townhouse on 0.00 Acres

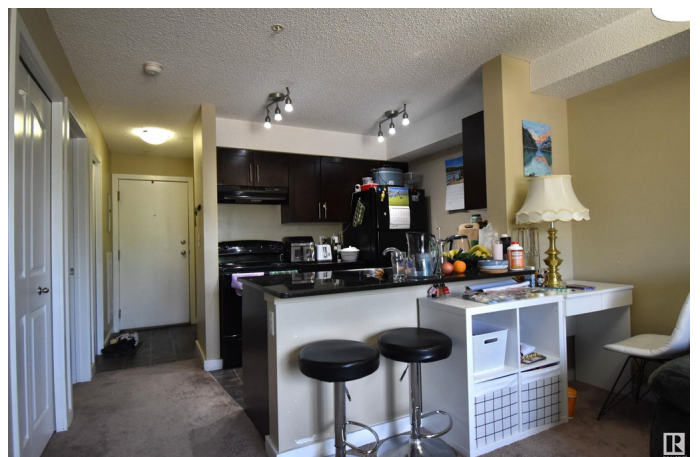
Walker, Edmonton, AB

INVESTORS and FIRST TIME HOME BUYERS ALERT!! This condo unit is perfect for you. No more problems with removing snow from your car, as it comes with one titled **UNDER GROUND** parking. This one bed, one Den of same size as the bedroom, & a bath is perfect for a family. It also includes an in-unit laundry. This location is very close to Charlesworth commercial Plaza & Harvest Hills Market which includes Walmart, SuperStore, Sobeys, Winners, Tim Hortons, McDonalds, 2 Gas Stations and many more stores. Costco , South Commons Commercials, Airport, Amazon are also at 10-15 minutes drive. Close to Gurdwara & Church. Transit is at the doorsteps.

Built in 2012

Essential Information

MLS® #	E4439804
Price	\$165,000
Bedrooms	1
Bathrooms	1.00
Full Baths	1
Square Footage	570
Acres	0.00
Year Built	2012
Type	Condo / Townhouse



Sub-Type	Lowrise Apartment
Style	Single Level Apartment
Status	Active

Community Information

Address	207 530 Watt Boulevard
Area	Edmonton
Subdivision	Walker
City	Edmonton
County	ALBERTA
Province	AB
Postal Code	T6X 1P7

Amenities

Amenities	On Street Parking, No Smoking Home, Parking-Visitor
Parking	Underground

Interior

Appliances	Dishwasher-Built-In, Hood Fan, Refrigerator, Stacked Washer/Dryer, Stove-Electric
Heating	Baseboard, Natural Gas
# of Stories	4
Stories	4
Has Basement	Yes
Basement	See Remarks

Exterior

Exterior	Wood, Stone, Vinyl
Exterior Features	Airport Nearby, Commercial, Flat Site, Playground Nearby, Public Transportation, Schools, Shopping Nearby
Roof	Asphalt Shingles
Construction	Wood, Stone, Vinyl
Foundation	Concrete Perimeter

Additional Information

Date Listed	June 1st, 2025
Days on Market	15
Zoning	Zone 53
Condo Fee	\$294

DATA IS DEEMED RELIABLE BUT IS NOT GUARANTEED ACCURATE BY THE REALTORS® ASSOCIATION OF EDMONTON. COPYRIGHT 2025 BY THE REALTORS® ASSOCIATION OF EDMONTON. ALL RIGHTS RESERVED. Trademarks are owned or controlled by the Canadian Real Estate Association (CREA) and identify real estate professionals who are members of CREA (REALTOR®, REALTORS®) and/or the quality of services they provide (MLS®, Multiple Listing Service®)

Listing information last updated on June 16th, 2025 at 6:32pm MDT