

# **\$175,000 - 320 11511 27 Avenue, Edmonton**

MLS® #E4439396

**\$175,000**

1 Bedroom, 1.00 Bathroom, 663 sqft

Condo / Townhouse on 0.00 Acres

Blue Quill, Edmonton, AB

Welcome to this beautifully maintained and bright 1-bedroom, 1-bathroom condo in the desirable community of Blue Quill. This unit offers a well-designed layout with a spacious bedroom, newer stainless steel appliances, and an oversized in-suite laundry/storage room with stacked washer and dryer for added convenience. Enjoy peaceful northeast exposure and relax on your large private balcony, perfect for sunny mornings or evening unwinding. The unit is located in a secure, well-managed building, offering peace of mind and comfort. Youâ€™ll love the central location, tucked in a quiet residential neighbourhood, just minutes from shopping, public transit, and the scenic Whitemud Creek Ravine for outdoor adventures. TITLED underground parking is included, providing year-round comfort and security. Whether youâ€™re a first-time buyer, investor, or looking to downsize, this home checks all the boxes. Move-in ready and full of value! Virtually staged photos.

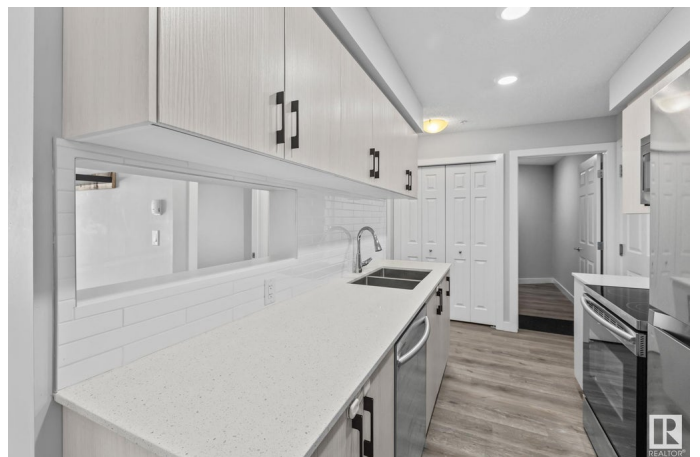
Built in 2003

## **Essential Information**

MLS® # E4439396

Price \$175,000

Bedrooms 1



Bathrooms	1.00
Full Baths	1
Square Footage	663
Acres	0.00
Year Built	2003
Type	Condo / Townhouse
Sub-Type	Lowrise Apartment
Style	Single Level Apartment
Status	Active

### Community Information

Address	320 11511 27 Avenue
Area	Edmonton
Subdivision	Blue Quill
City	Edmonton
County	ALBERTA
Province	AB
Postal Code	T6J 7J8

### Amenities

Amenities	Off Street Parking, Deck, No Animal Home, No Smoking Home, Parking-Visitor, Secured Parking, Security Door, Storage-In-Suite
Parking Spaces	1
Parking	Heated, Underground

### Interior

Appliances	Dishwasher-Built-In, Dryer, Microwave Hood Fan, Refrigerator, Stove-Electric, Washer
Heating	Baseboard, Hot Water, Natural Gas
# of Stories	4
Stories	1
Has Basement	Yes
Basement	None, No Basement

### Exterior

Exterior	Wood, Vinyl
Exterior Features	Shopping Nearby
Roof	Asphalt Shingles
Construction	Wood, Vinyl

Foundation                      Concrete Perimeter

**Additional Information**

Date Listed                      May 30th, 2025  
Days on Market                35  
Zoning                              Zone 16  
Condo Fee                        \$379

DATA IS DEEMED RELIABLE BUT IS NOT GUARANTEED ACCURATE BY THE REALTORS® ASSOCIATION OF EDMONTON. COPYRIGHT 2025 BY THE REALTORS® ASSOCIATION OF EDMONTON. ALL RIGHTS RESERVED.Trademarks are owned or controlled by the Canadian Real Estate Association (CREA) and identify real estate professionals who are members of CREA (REALTOR®, REALTORS®) and/or the quality of services they provide (MLS®, Multiple Listing Service®)  
Listing information last updated on July 4th, 2025 at 8:17pm MDT