

\$1,098,000 - 10725 & 10727 113 Street, Edmonton

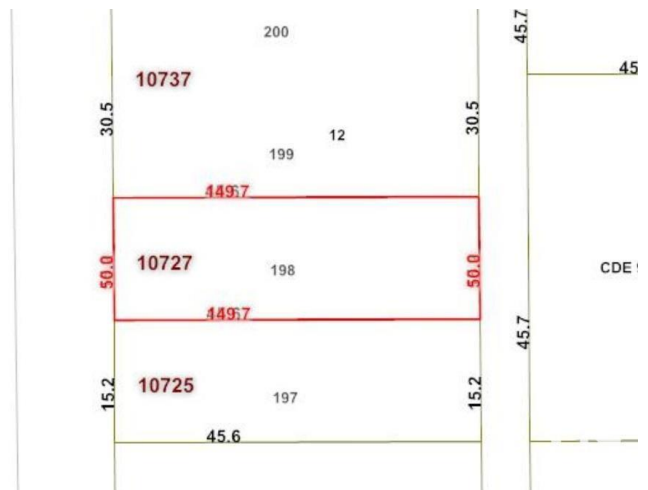
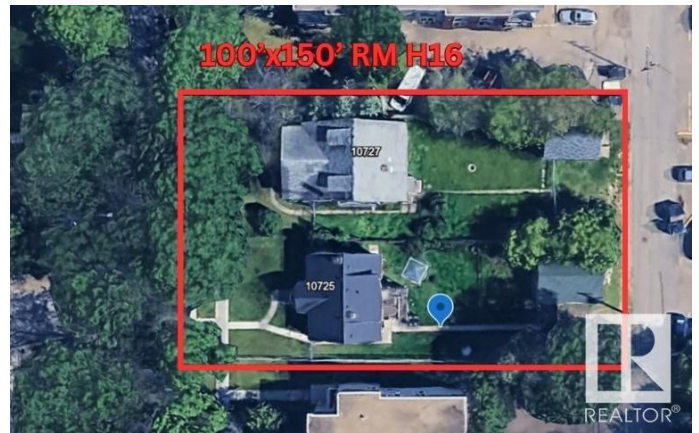
MLS® #E4435667

\$1,098,000

0 Bedroom, 0.00 Bathroom,
Multi-Family Commercial on 0.00 Acres

Queen Mary Park, Edmonton, AB

100'x150' RM H16 Medium Scale Residential zoned lots in Queen Mary Park. Great potential for CMHC MLI "apartment building, 4plex w/ legal basement suites, skinnies, lots of opportunities to maximize your investment. This location is excellent for future redevelopment, close to amenities, public transit, LRT, minutes from downtown & in a neighbourhood where other redevelopment is already happening & more being planned all the time. Take advantage of the City encouraging higher density & development & secure your next project! One home has current rental income & long term tenants



Built in 1927

Essential Information

MLS® #	E4435667
Price	\$1,098,000
Bathrooms	0.00
Acres	0.00
Year Built	1927
Type	Multi-Family Commercial
Status	Active

Community Information

Address	10725 & 10727 113 Street
Area	Edmonton

Subdivision	Queen Mary Park
City	Edmonton
County	ALBERTA
Province	AB
Postal Code	T5H 3H9

Exterior

Exterior	Wood Frame
Construction	Wood Frame

Additional Information

Date Listed	May 9th, 2025
Days on Market	6
Zoning	Zone 08

DATA IS DEEMED RELIABLE BUT IS NOT GUARANTEED ACCURATE BY THE REALTORS® ASSOCIATION OF EDMONTON. COPYRIGHT 2025 BY THE REALTORS® ASSOCIATION OF EDMONTON. ALL RIGHTS RESERVED. Trademarks are owned or controlled by the Canadian Real Estate Association (CREA) and identify real estate professionals who are members of CREA (REALTOR®, REALTORS®) and/or the quality of services they provide (MLS®, Multiple Listing Service®)

Listing information last updated on May 15th, 2025 at 1:17am MDT