

\$595,000 - 56 929 Picard Drive, Edmonton

MLS® #E4434784

\$595,000

3 Bedroom, 3.00 Bathroom, 1,575 sqft

Condo / Townhouse on 0.00 Acres

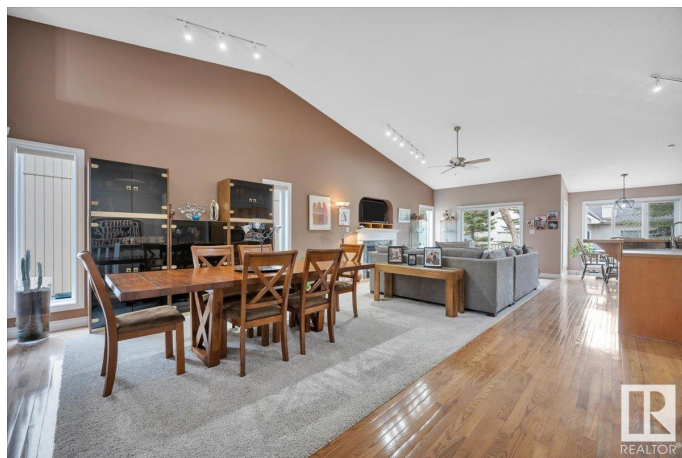
Potter Greens, Edmonton, AB

Spacious 1,575 sq ft, open concept, ,45+ half duplex w/2+1 bedroom, & 3 bathrooms in Potters Green (just off Lewis Estates Golf Course). Open layout, vaulted ceiling, great for entertaining family and friends. Flooded with natural light, large windows. Primary suite roomy with walk-in closet & 4 pc bathroom. Main Floor laundry, double attached garage, hardwood floors, gas fireplace. Large basement, recreation room, guest bedroom, office, workshop. Well cared for home, original owner. South facing deck provides an abundance of light all day long (BBQ hook-up). Willing to negotiate furniture and 10 person dining table. This is a bare land condo. Roof - neoprene. Located in desirable LEWIS ESTATES, this home is ideal for those seeking upscale living with the easy of low maintenance lifestyle.

Built in 2000

Essential Information

MLS® #	E4434784
Price	\$595,000
Bedrooms	3
Bathrooms	3.00
Full Baths	3
Square Footage	1,575
Acres	0.00



Year Built	2000
Type	Condo / Townhouse
Sub-Type	Half Duplex
Style	Bungalow
Status	Active

Community Information

Address	56 929 Picard Drive
Area	Edmonton
Subdivision	Potter Greens
City	Edmonton
County	ALBERTA
Province	AB
Postal Code	T5T 6J7

Amenities

Amenities	Closet Organizers, Deck, No Animal Home, No Smoking Home, Storage-In-Suite, Vaulted Ceiling, Workshop, Natural Gas BBQ Hookup
Parking	Double Garage Attached

Interior

Interior Features	ensuite bathroom
Appliances	Alarm/Security System, Dishwasher-Built-In, Dryer, Fan-Ceiling, Garage Control, Garage Opener, Oven-Microwave, Refrigerator, Vacuum System Attachments, Vacuum Systems, Washer, Window Coverings, Stoves-Two, Projector
Heating	Forced Air-1, Natural Gas
Fireplace	Yes
Fireplaces	Stone Facing
Stories	2
Has Basement	Yes
Basement	Full, Finished

Exterior

Exterior	Wood, Stone, Vinyl
Exterior Features	Backs Onto Park/Trees, Golf Nearby, Not Fenced, Playground Nearby, Treed Lot
Roof	See Remarks
Construction	Wood, Stone, Vinyl
Foundation	Concrete Perimeter

Additional Information

Date Listed	May 6th, 2025
Days on Market	42
Zoning	Zone 58
Condo Fee	\$518

DATA IS DEEMED RELIABLE BUT IS NOT GUARANTEED ACCURATE BY THE REALTORS® ASSOCIATION OF EDMONTON. COPYRIGHT 2025 BY THE REALTORS® ASSOCIATION OF EDMONTON. ALL RIGHTS RESERVED.Trademarks are owned or controlled by the Canadian Real Estate Association (CREA) and identify real estate professionals who are members of CREA (REALTOR®, REALTORS®) and/or the quality of services they provide (MLS®, Multiple Listing Service®)

Listing information last updated on June 17th, 2025 at 5:02pm MDT