

\$375,000 - 522 11080 Ellerslie Road, Edmonton

MLS® #E4433844

\$375,000

2 Bedroom, 2.00 Bathroom, 1,165 sqft

Condo / Townhouse on 0.00 Acres

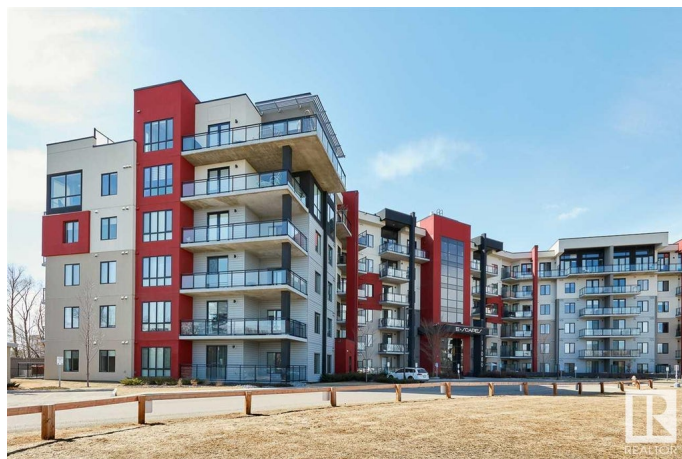
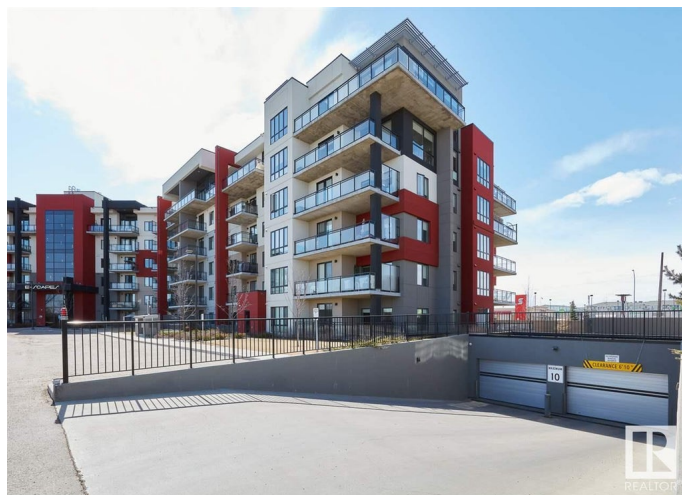
Richford, Edmonton, AB

FLOOR to CEILING WINDOWS in this CONCRETE and STEEL building! Modern and Elegant, this 2 BEDROOM/2 BATH end unit features a gourmet kitchen with eating bar, upgraded stainless steel appliances, quartz counters, soft close cabinets, a built-in pantry, and gorgeous dining room with fireplace. The luxurious master bedroom has a walk-through closet, beautiful lighting, and a large ensuite. Other great features are central A/C, in-suite laundry & storage and 2 UNDERGROUND PARKING stalls and extra storage. Enjoy the gorgeous view from the SE facing balcony with glass railing and gas barbeque outlet. Amenities include: a guest suite, fitness centre, 2 ROOFTOP TERRACES, and a LOUNGE with a bar, kitchen and billiards. Shopping, restaurants, public transportation and all your amenities are just across the street! 10 MINUTES TO THE AIRPORT.

Built in 2014

Essential Information

MLS® #	E4433844
Price	\$375,000
Bedrooms	2
Bathrooms	2.00
Full Baths	2
Square Footage	1,165



Acres	0.00
Year Built	2014
Type	Condo / Townhouse
Sub-Type	Apartment High Rise
Style	Penthouse
Status	Active

Community Information

Address	522 11080 Ellerslie Road
Area	Edmonton
Subdivision	Richford
City	Edmonton
County	ALBERTA
Province	AB
Postal Code	T6W 2C2

Amenities

Amenities	Air Conditioner, Exercise Room, Parking-Visitor, Party Room, Secured Parking, Security Door
Parking	Double Indoor, Heated, Underground

Interior

Interior Features	ensuite bathroom
Appliances	Dishwasher-Built-In, Dryer, Microwave Hood Fan, Refrigerator, Stove-Gas, Washer, Window Coverings
Heating	Fan Coil, Natural Gas
Fireplace	Yes
Fireplaces	Wall Mount
# of Stories	6
Stories	6
Has Basement	Yes
Basement	None, No Basement

Exterior

Exterior	Concrete, Stucco
Exterior Features	Airport Nearby, Playground Nearby, Public Transportation, Shopping Nearby
Roof	Flat
Construction	Concrete, Stucco

Foundation Concrete Perimeter

Additional Information

Date Listed May 1st, 2025
Days on Market 62
Zoning Zone 55
Condo Fee \$810

DATA IS DEEMED RELIABLE BUT IS NOT GUARANTEED ACCURATE BY THE REALTORS® ASSOCIATION OF EDMONTON. COPYRIGHT 2025 BY THE REALTORS® ASSOCIATION OF EDMONTON. ALL RIGHTS RESERVED.Trademarks are owned or controlled by the Canadian Real Estate Association (CREA) and identify real estate professionals who are members of CREA (REALTOR®, REALTORS®) and/or the quality of services they provide (MLS®, Multiple Listing Service®)
Listing information last updated on July 2nd, 2025 at 7:17am MDT