

\$820,000 - 3512 Erlanger Link, Edmonton

MLS® #E4432354

\$820,000

7 Bedroom, 4.00 Bathroom, 2,233 sqft

Single Family on 0.00 Acres

Edgemont (Edmonton), Edmonton, AB

Welcome to your Dream Home! This stunning 7 bedroom, 4 bathroom home offers the perfect blend of modern convenience and timeless charm. Located in a quiet, family-friendly neighborhood, this spacious two-storey home is ideal for growing families, savvy investors or anyone who appreciates the finer things in life. The open concept design on the main floor is a blend of modern elegance and convenience; Main floor bedroom with full bath, a meticulously planned kitchen with lots of cabinets, quartz countertops and a top of the line stainless steel appliances. Upstairs is a generous bonus room with a striking vaulted ceiling, a full-size laundry room, full bath 4 additional bedrooms. The luxurious primary suite is a private retreat with a walk-in closet and a spa-inspired 5pc ensuite; hot tub, glass shower, and dual sink. The fully finished basement adds incredible value with two bedrooms, a full bathroom and ample storage space. Whatever your plan, this home offers the space and style to do it all.

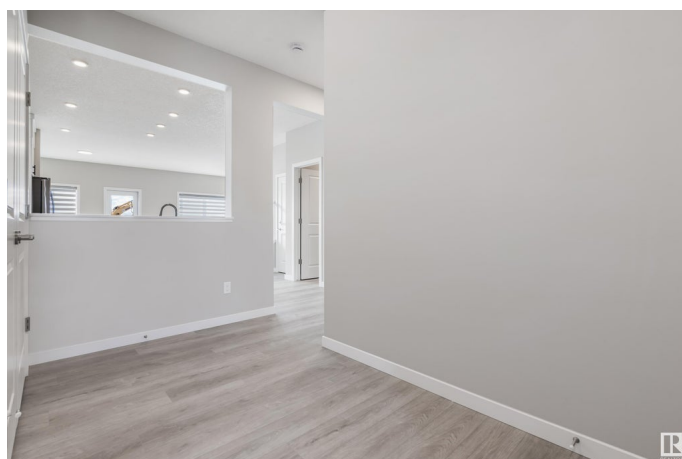
Built in 2024

Essential Information

MLS® # E4432354

Price \$820,000

Bedrooms 7



Bathrooms	4.00
Full Baths	4
Square Footage	2,233
Acres	0.00
Year Built	2024
Type	Single Family
Sub-Type	Detached Single Family
Style	2 Storey
Status	Active

Community Information

Address	3512 Erlanger Link
Area	Edmonton
Subdivision	Edgemont (Edmonton)
City	Edmonton
County	ALBERTA
Province	AB
Postal Code	T6M 3A5

Amenities

Amenities	Carbon Monoxide Detectors, Ceiling 9 ft., Detectors Smoke, Guest Suite, Smart/Program. Thermostat, Secured Parking, See Remarks, 9 ft. Basement Ceiling
Parking	Double Garage Attached

Interior

Interior Features	ensuite bathroom
Appliances	Garage Control, Garage Opener, Hood Fan, Stove-Electric, See Remarks, Dryer-Two, Refrigerators-Two, Stoves-Two, Washers-Two, Dishwasher-Two, Curtains and Blinds
Heating	Forced Air-1, Natural Gas
Fireplace	Yes
Fireplaces	Remote Control, See Remarks
Stories	2
Has Suite	Yes
Has Basement	Yes
Basement	Full, Finished

Exterior

Exterior	Wood, Vinyl, See Remarks
Exterior Features	Airport Nearby, Landscaped, Level Land, Paved Lane, Playground Nearby, Public Transportation, Schools, Shopping Nearby, Stream/Pond, See Remarks
Roof	Asphalt Shingles
Construction	Wood, Vinyl, See Remarks
Foundation	Concrete Perimeter

Additional Information

Date Listed	April 23rd, 2025
Days on Market	70
Zoning	Zone 57

DATA IS DEEMED RELIABLE BUT IS NOT GUARANTEED ACCURATE BY THE REALTORS® ASSOCIATION OF EDMONTON. COPYRIGHT 2025 BY THE REALTORS® ASSOCIATION OF EDMONTON. ALL RIGHTS RESERVED.Trademarks are owned or controlled by the Canadian Real Estate Association (CREA) and identify real estate professionals who are members of CREA (REALTOR®, REALTORS®) and/or the quality of services they provide (MLS®, Multiple Listing Service®)

Listing information last updated on July 1st, 2025 at 10:17pm MDT