

\$510,000 - 1988 Tanner Wynd, Edmonton

MLS® #E4431376

\$510,000

3 Bedroom, 2.50 Bathroom, 1,487 sqft

Single Family on 0.00 Acres

Terwillegar Towne, Edmonton, AB

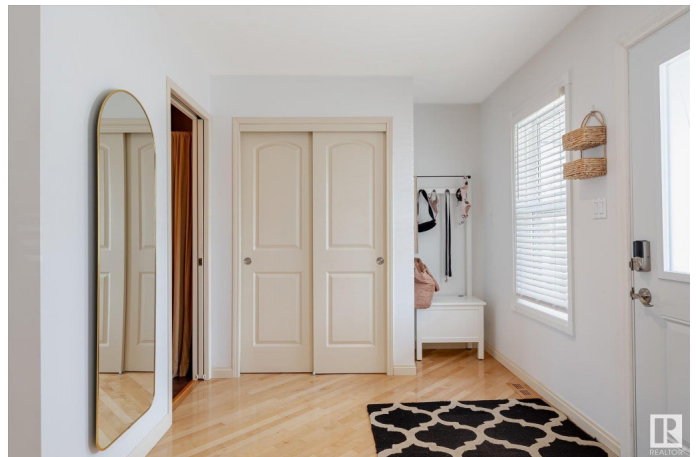
Fully finished AND updated home on large lot in Terwillegar? Find it here! Welcome to 1988 Tanner WYND, a 2 storey home with almost 1500 sqr ft plus a finished basement. Complete with 3 bedrooms, 2.5 bathrooms, detached double garage (with possible RV parking) and a pie shaped lot - this home has it all. Past the charming front porch you are welcomed into the main floor finished with maple hardwood floors and spacious living room. Into the kitchen notice custom cabinetry (to the ceiling), coffee bar, expansive island, and spacious dining area with a gas fireplace... this place is great for entertaining! Access to the two tiered deck and west facing backyard is off the back mudroom. Upstairs enjoy no carpet, main bathroom and 3 bedrooms including large primary with walk in closet and ensuite. The basement is finished as one large rec space perfect for the family. Amazing location near the rec centre, shopping, and great schools make this immaculately maintained home a rare and valuable find!

Built in 1998

Essential Information

MLS® # E4431376

Price \$510,000



Bedrooms	3
Bathrooms	2.50
Full Baths	2
Half Baths	1
Square Footage	1,487
Acres	0.00
Year Built	1998
Type	Single Family
Sub-Type	Detached Single Family
Style	2 Storey
Status	Active

Community Information

Address	1988 Tanner Wynd
Area	Edmonton
Subdivision	Terwillegar Towne
City	Edmonton
County	ALBERTA
Province	AB
Postal Code	T6R 2S4

Amenities

Amenities	On Street Parking, Air Conditioner, Deck, Front Porch, No Smoking Home
Parking	Double Garage Detached

Interior

Interior Features	ensuite bathroom
Appliances	Air Conditioning-Central, Dishwasher-Built-In, Dryer, Garage Control, Garage Opener, Hood Fan, Refrigerator, Stove-Electric, Washer, Window Coverings
Heating	Forced Air-1, Natural Gas
Fireplace	Yes
Fireplaces	Insert, Tile Surround
Stories	3
Has Basement	Yes
Basement	Full, Finished

Exterior

Exterior	Wood, Vinyl
Exterior Features	Back Lane, Fenced, Flat Site, Landscaped, Level Land, No Through Road, Paved Lane, Playground Nearby, Private Setting, Public Transportation, Schools, Shopping Nearby, See Remarks
Roof	Asphalt Shingles
Construction	Wood, Vinyl
Foundation	Concrete Perimeter

Additional Information

Date Listed	April 17th, 2025
Days on Market	14
Zoning	Zone 14
HOA Fees	138
HOA Fees Freq.	Annually

DATA IS DEEMED RELIABLE BUT IS NOT GUARANTEED ACCURATE BY THE REALTORS® ASSOCIATION OF EDMONTON. COPYRIGHT 2025 BY THE REALTORS® ASSOCIATION OF EDMONTON. ALL RIGHTS RESERVED. Trademarks are owned or controlled by the Canadian Real Estate Association (CREA) and identify real estate professionals who are members of CREA (REALTOR®, REALTORS®) and/or the quality of services they provide (MLS®, Multiple Listing Service®)

Listing information last updated on May 1st, 2025 at 2:02am MDT