

\$1,278,690 - 4367 167 Avenue, Edmonton

MLS® #E4429621

\$1,278,690

0 Bedroom, 0.00 Bathroom,
Retail on 0.00 Acres

Brintnell, Edmonton, AB

A 2,430 commercial bay with 2 front doors located at a prime main floor location in a popular mall of the Brintnell community in the North Edmonton. This CB2 zoning commercial condo comes with 2 titled underground heated parking stalls and is well maintained with plentiful free public parking spaces for customers. Different varieties of commercial retails and businesses have become packed and mature around the community. The bay has never been occupied and you can plan your design layout without any encumbrances. The mall is conveniently located with high visibility and easy accessibility and is well connected to Manning Drive, a very main road 66ST, 153 Ave and Anthony Henday.

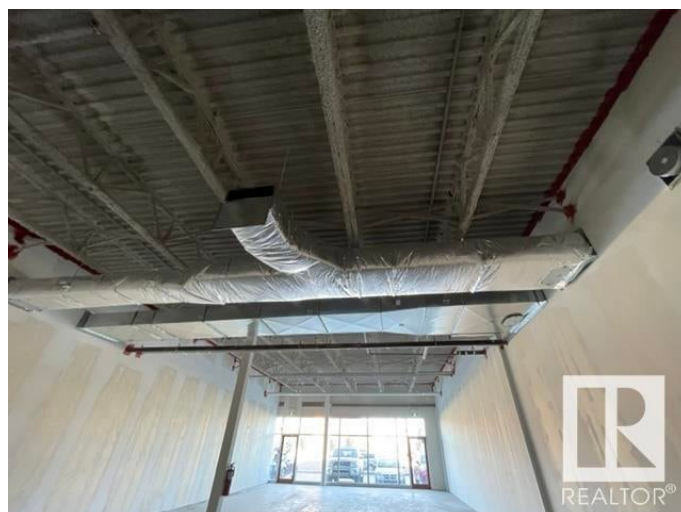
Built in 2017

Essential Information

MLS® #	E4429621
Price	\$1,278,690
Bathrooms	0.00
Acres	0.00
Year Built	2017
Type	Retail
Status	Active

Community Information

Address 4367 167 Avenue



Area	Edmonton
Subdivision	Brintnell
City	Edmonton
County	ALBERTA
Province	AB
Postal Code	T5Y 3Y2

Exterior

Exterior	Wood Frame, Mixed
Construction	Wood Frame, Mixed

Additional Information

Date Listed	April 8th, 2025
Days on Market	70
Zoning	Zone 03

DATA IS DEEMED RELIABLE BUT IS NOT GUARANTEED ACCURATE BY THE REALTORS® ASSOCIATION OF EDMONTON. COPYRIGHT 2025 BY THE REALTORS® ASSOCIATION OF EDMONTON. ALL RIGHTS RESERVED. Trademarks are owned or controlled by the Canadian Real Estate Association (CREA) and identify real estate professionals who are members of CREA (REALTOR®, REALTORS®) and/or the quality of services they provide (MLS®, Multiple Listing Service®)

Listing information last updated on June 17th, 2025 at 5:17am MDT