

\$469,900 - 27 Belmont Crescent, Spruce Grove

MLS® #E4429513

\$469,900

5 Bedroom, 2.50 Bathroom, 1,025 sqft
Single Family on 0.00 Acres

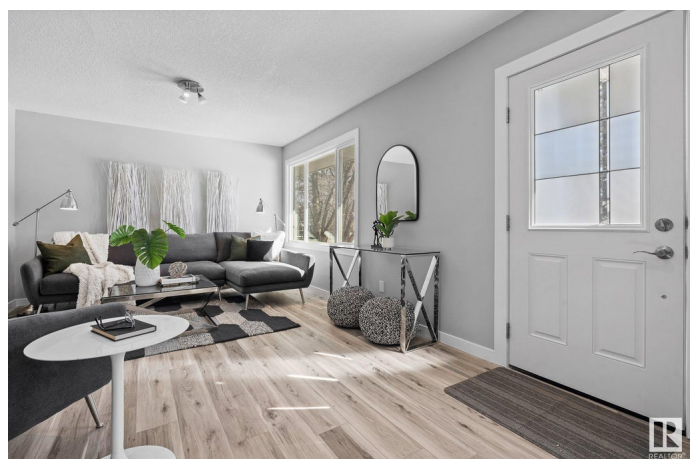
Broxton Park, Spruce Grove, AB

Welcome to this fully renovated, turn-key 5-bed, 2.5-bath home! Thoughtfully updated throughout, this home blends modern style with everyday comfort. The brand-new kitchen shines with sleek cabinets, countertops, and flooring, while the main floor features freshly updated California knockdown ceilings for a bright, modern feel. The fully finished basement with a separate entrance offers endless possibilities. Retreat to the newly renovated primary bath for a touch of luxury. Outside, enjoy a 10x16â€™™ deck (to be completed when weather permits), a double detached garage, and extensive exterior upgrades, including new windows, doors, soffits, and fascia. Plus, a new back sewer backup valve provides added peace of mind. Move-in ready and beautifully upgraded!

Built in 1969

Essential Information

| | |
|----------------|-----------|
| MLS® # | E4429513 |
| Price | \$469,900 |
| Bedrooms | 5 |
| Bathrooms | 2.50 |
| Full Baths | 2 |
| Half Baths | 1 |
| Square Footage | 1,025 |
| Acres | 0.00 |



| | |
|------------|------------------------|
| Year Built | 1969 |
| Type | Single Family |
| Sub-Type | Detached Single Family |
| Style | Bungalow |
| Status | Active |

Community Information

| | |
|-------------|---------------------|
| Address | 27 Belmont Crescent |
| Area | Spruce Grove |
| Subdivision | Broxton Park |
| City | Spruce Grove |
| County | ALBERTA |
| Province | AB |
| Postal Code | T7X 2G3 |

Amenities

| | |
|-----------|------------------------|
| Amenities | Deck, Vinyl Windows |
| Parking | Double Garage Detached |

Interior

| | |
|-------------------|---|
| Interior Features | ensuite bathroom |
| Appliances | Dishwasher-Built-In, Dryer, Garage Control, Garage Opener, Microwave Hood Fan, Refrigerator, Stove-Electric, Washer |
| Heating | Forced Air-1, Natural Gas |
| Stories | 2 |
| Has Basement | Yes |
| Basement | Full, Finished |

Exterior

| | |
|-------------------|--|
| Exterior | Wood, Stucco |
| Exterior Features | Back Lane, Backs Onto Park/Trees, Fenced, Golf Nearby, Playground Nearby, Schools, Shopping Nearby |
| Roof | Asphalt Shingles |
| Construction | Wood, Stucco |
| Foundation | Concrete Perimeter |

Additional Information

| | |
|----------------|-----------------|
| Date Listed | April 7th, 2025 |
| Days on Market | 25 |

Zoning

Zone 91

DATA IS DEEMED RELIABLE BUT IS NOT GUARANTEED ACCURATE BY THE REALTORS® ASSOCIATION OF EDMONTON. COPYRIGHT 2025 BY THE REALTORS® ASSOCIATION OF EDMONTON. ALL RIGHTS RESERVED. Trademarks are owned or controlled by the Canadian Real Estate Association (CREA) and identify real estate professionals who are members of CREA (REALTOR®, REALTORS®) and/or the quality of services they provide (MLS®, Multiple Listing Service®)

Listing information last updated on May 2nd, 2025 at 5:32am MDT