

\$185,000 - 324 6315 135 Avenue, Edmonton

MLS® #E4423993

\$185,000

2 Bedroom, 2.00 Bathroom, 948 sqft

Condo / Townhouse on 0.00 Acres

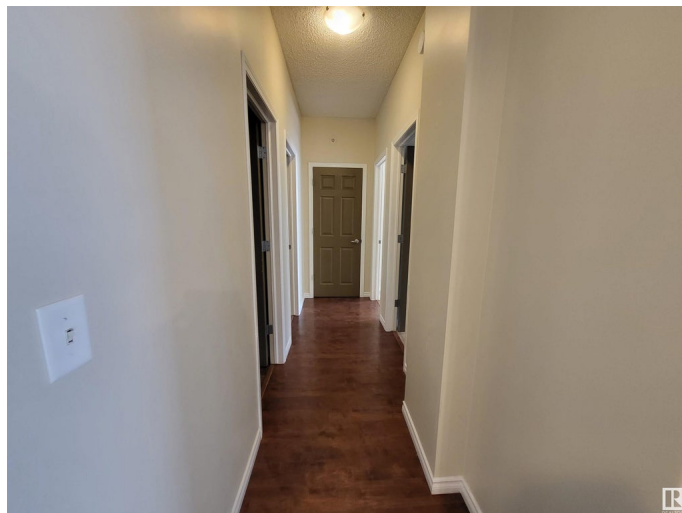
Belvedere, Edmonton, AB

Welcome to Holland Gardens, a recently updated 2-bed, 2-bath condo in Edmonton. This unit is situated in a concrete superstructure and offers a comfortable living space with 9' ceilings, fresh paint, newer carpet in bedrooms, new dishwasher, and modern laminate & lino flooring. The primary bedroom features a walk-through closet and a 3-piece ensuite with a large shower. In-suite laundry is included for added convenience. Cancel your gym membership because the building has an exercise facility. Condo fees cover water, heat, power, and more. Located close to schools, public transit, and Londonderry Mall. It comes with underground parking and storage. Enjoy sunset views from the peaceful west-facing balcony where you can barbecue and relax. Don't miss this opportunity in Edmonton!

Built in 2006

Essential Information

MLS® #	E4423993
Price	\$185,000
Bedrooms	2
Bathrooms	2.00
Full Baths	2
Square Footage	948
Acres	0.00



Year Built	2006
Type	Condo / Townhouse
Sub-Type	Lowrise Apartment
Style	Single Level Apartment
Status	Active

Community Information

Address	324 6315 135 Avenue
Area	Edmonton
Subdivision	Belvedere
City	Edmonton
County	ALBERTA
Province	AB
Postal Code	T5A 0A8

Amenities

Amenities	Closet Organizers, Exercise Room, Parking-Visitor, Secured Parking, Security Door, Vinyl Windows, Natural Gas BBQ Hookup
Parking	Underground

Interior

Interior Features	ensuite bathroom
Appliances	Dishwasher-Built-In, Dryer, Microwave Hood Fan, Refrigerator, Stove-Electric, Washer, Window Coverings
Heating	Hot Water, Natural Gas
# of Stories	4
Stories	1
Has Basement	Yes
Basement	None, No Basement

Exterior

Exterior	Concrete, Brick, Stucco
Exterior Features	Landscaped, Picnic Area, Playground Nearby, Private Setting, Public Transportation, Schools, Shopping Nearby
Roof	Asphalt Shingles
Construction	Concrete, Brick, Stucco
Foundation	Concrete Perimeter

Additional Information

Date Listed	March 5th, 2025
-------------	-----------------

Days on Market	57
Zoning	Zone 02
Condo Fee	\$645

DATA IS DEEMED RELIABLE BUT IS NOT GUARANTEED ACCURATE BY THE REALTORS® ASSOCIATION OF EDMONTON. COPYRIGHT 2025 BY THE REALTORS® ASSOCIATION OF EDMONTON. ALL RIGHTS RESERVED. Trademarks are owned or controlled by the Canadian Real Estate Association (CREA) and identify real estate professionals who are members of CREA (REALTOR®, REALTORS®) and/or the quality of services they provide (MLS®, Multiple Listing Service®)

Listing information last updated on April 30th, 2025 at 11:02pm MDT