

\$345,000 - 805 10142 111 Street, Edmonton

MLS® #E4422159

\$345,000

2 Bedroom, 2.00 Bathroom, 1,141 sqft

Condo / Townhouse on 0.00 Acres

W&hkw&ant&win, Edmonton, AB

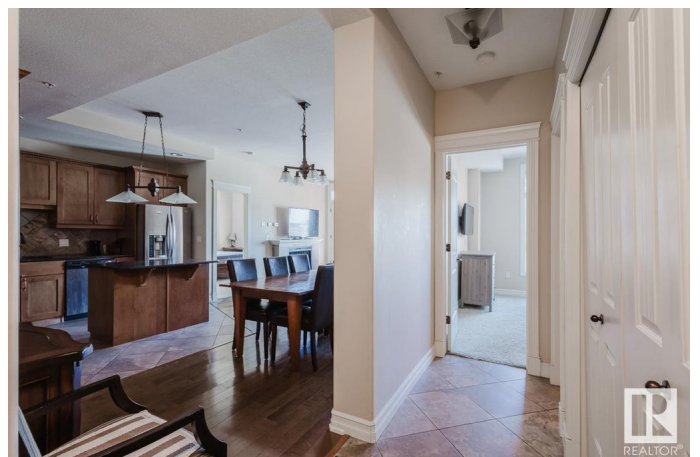
Step into urban sophistication! This luxurious 2-bedroom corner condo in Meridian Plaza dazzles from the 8th floor with SOUTHWEST EXPOSURE, bathing both living spaces in sunlight through dual-aspect windows. Soaring 9'™ ceilings, rich hardwood flooring, and sleek ceramic tiles create a grand entrance. The living room features a TWO-SIDED FIREPLACE and garden doors opening to a balcony with a gas BBQ hookup—ideal for entertaining. The OPEN-CONCEPT KITCHEN impresses with wood cabinetry, granite countertops, a central island, and stainless steel appliances. The master suite boasts a walk-in closet and a spa-like 4pc ensuite with a soaker tub and glass shower, while a second full bathroom serves guests. Practical perks include in-suite laundry, HEATED UNDERGROUND PARKING, and a storage locker. Enjoy premium building amenities: two elevators, an event center, owner's lounge, fitness room, and bike storage. Perfectly blending elegance and convenience, this downtown gem redefines luxury living.

Built in 2009

Essential Information

MLS® # E4422159

Price \$345,000



Bedrooms	2
Bathrooms	2.00
Full Baths	2
Square Footage	1,141
Acres	0.00
Year Built	2009
Type	Condo / Townhouse
Sub-Type	Apartment High Rise
Style	Single Level Apartment
Status	Active

Community Information

Address	805 10142 111 Street
Area	Edmonton
Subdivision	WÃ©hkwÃ©ntÃ©win
City	Edmonton
County	ALBERTA
Province	AB
Postal Code	T5K 1K6

Amenities

Amenities	Air Conditioner, Ceiling 9 ft., See Remarks
Parking	Heated, Underground

Interior

Interior Features	ensuite bathroom
Appliances	Air Conditioning-Central, Dishwasher-Built-In, Hood Fan, Oven-Microwave, Refrigerator, Stacked Washer/Dryer, Stove-Electric, Window Coverings
Heating	Heat Pump, Natural Gas
# of Stories	10
Stories	1
Has Basement	Yes
Basement	None, No Basement

Exterior

Exterior	Concrete, Brick, Stucco
Exterior Features	Public Transportation, View Downtown, See Remarks
Roof	Metal

Construction	Concrete, Brick, Stucco
Foundation	Concrete Perimeter

Additional Information

Date Listed	February 20th, 2025
Days on Market	70
Zoning	Zone 12
Condo Fee	\$747

DATA IS DEEMED RELIABLE BUT IS NOT GUARANTEED ACCURATE BY THE REALTORS® ASSOCIATION OF EDMONTON. COPYRIGHT 2025 BY THE REALTORS® ASSOCIATION OF EDMONTON. ALL RIGHTS RESERVED.Trademarks are owned or controlled by the Canadian Real Estate Association (CREA) and identify real estate professionals who are members of CREA (REALTOR®, REALTORS®) and/or the quality of services they provide (MLS®, Multiple Listing Service®)

Listing information last updated on April 30th, 2025 at 11:17pm MDT